

Health & Safety Scorecard

April^{YTD} 2018

Perfect Days

Per Month
Goal = 20

27

Training

Employee Certifications
This Month

41

TRIF / LRIF

Incident Frequency
Goal = 5.53 / 2.11

3.1/1.3

Take 10's

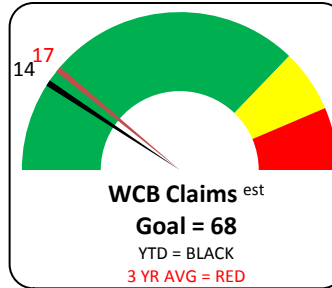
Completed 18/10
Goal = 2400 per Year

119

Orientation's

Completed as Planned
Goal = 100%

100%



Safety Walks

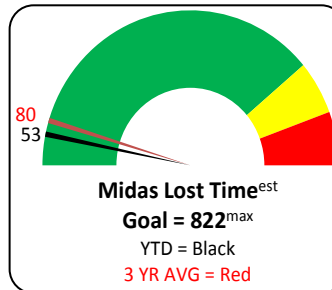
Completed 18/19
Goal = 150 per Year

3

Location Visits

Completed
Goal = 154 Locations

104



SOP's

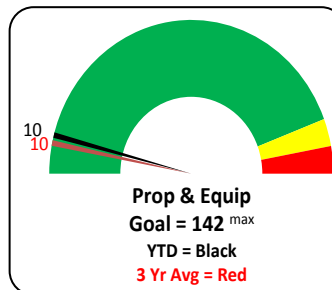
Reviewed 18/19
Goal = 150 per Year

46

OHC Inspection

Completed per Quarter
Goal = 100%

94%



WCB Claims – Top 4

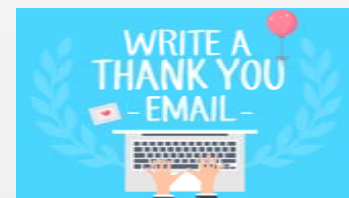
Back
5

Shoulder
2

Hand
3

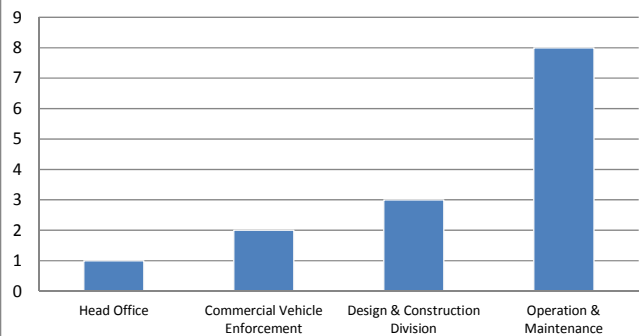
Knee
2

HOW TO BE HAPPY AT WORK



Safety - Environment - Quality - Production

WCB Claims - 2018 YTD



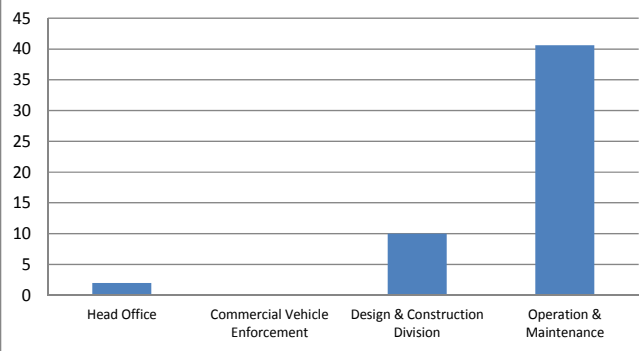
Status = **On Track**

(4 out of 12 months)

Path to Success

1. Develop a safety first attitude.
2. Plan the activities and follow the plan.
3. Use "Take 10" tool to identify hazards and have control in place prior to starting the task.
4. Take the time necessary to complete the job safely and ask for help if needed.
5. Look out for yourself and others.

Injury Lost Time - 2018/19 YTD



Status = **On Track**

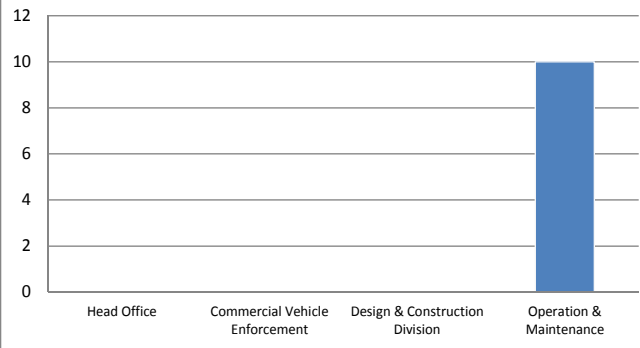
(1 out of 12 months)

Path to Success

The goal is to return employees to work during the recovery period as soon as safely possible to their regular or modified duties.

Accommodated work is available for most injury's.

Property & Equipment - 2018/19 YTD



Status = **On Track**

(1 out of 12 months)

Path to Success

Focus on backing up and contact incidents.

- Complete a walk around your unit before moving. (360 walk around)
- Use a spotter as needed.
- Ensure overhead doors are fully open.
- Ensure box is down
- Ensure overhead line clearance is appropriate.

Following the Preventive Maintenance plan will reduce unplanned equipment failures.

Incident Summary

WCB No Time Loss Claims

Slipped in mud – back injury

Lifting mix – back injury

WCB Time Loss Claims

Lump on hand

Injury 1st Aid

Checking culvert and slipped on ice

Slag in eye using cutting torch

Ricochet bullet broke skin under elbow

Near Miss P & E

Trailer lifted while loading equipment

Preventable P&E Incidents

3 D Unit's - hit MHI building/shop

D Unit - Tail light wiring pulled out of electrical box

D Unit – wore frog

Loader - hit building

Grader - hit train tracks

CVA - bent receiver while towing grader

CVA - hit vehicle in parking lot

CVA - slid down ditch and hit sign post

Chain saw fell breaking handle

Unpreventable P&E Incidents

2 D Units – Tire/recap blew

D Unit – air bags deflated

D Unit - Rotary light broke – hit ceiling in car wash

D Unit – wind caught door broke glass

D Unit – wing arm cracked

CVA/Truck - Hit a deer

CVA/Truck – public vehicle backed into parked unit

Grader - Wind caught door breaking glass

Grader - Broke bolt on grader

Other – wind caught door – breaking closer mount