

Health & Safety Scorecard

August^{YTD} 2018

Perfect Days

Per Month
Goal = 20

28

Training

Employee Certifications
This Month

34

TRIF / LTIF

Incident Frequency
Goal = 5.53 / 2.11

4.3/1.4

Let's Build a
Mentally
Healthy Workplace
Together

NOT
myself
TODAY*



Association canadienne
pour la santé mentale
La santé mentale pour tous



Take 10's

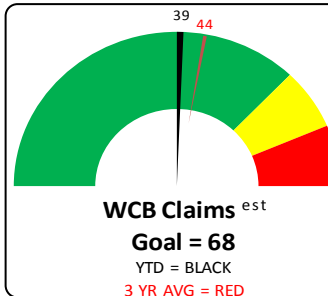
Completed 18/19
Goal = 2400 per Year

830

Orientation's

Completed as Planned
Goal = 100%

9/12



Not
Myself
Today

Hangry

Refreshed

Inspired

Balanced

Giddy

Stoked

Deflated

Safety Walks

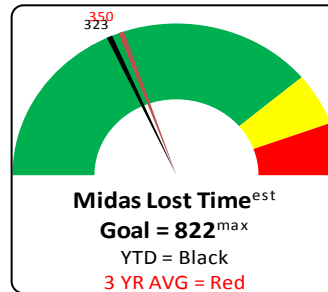
Completed 18/19
Goal = 150 per Year

60

Location Visits

Completed
Goal = 154 Locations

104



Sad

Frazzled

Grumpy

Chill

Anxious

Sensitive

Indecisive

Awesome

SOP's

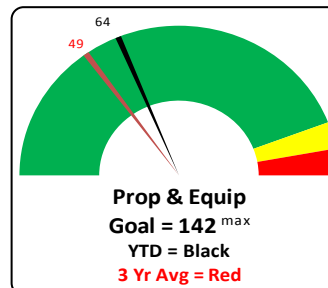
Reviewed 18/19
Goal = 150 per Year

46

OHC Inspection

Completed per Quarter
Goal = 100%

97%



WCB Claims – Top 4

Back

10

Hands

10

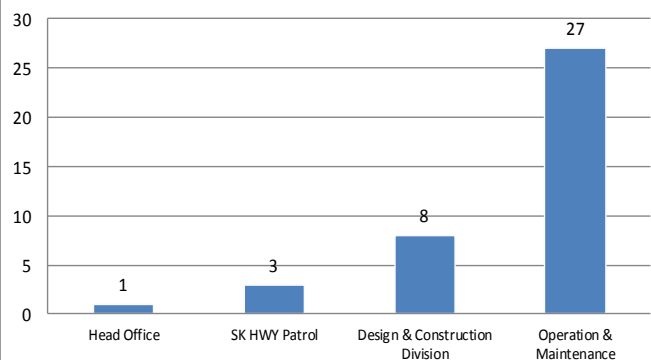
Knee

5

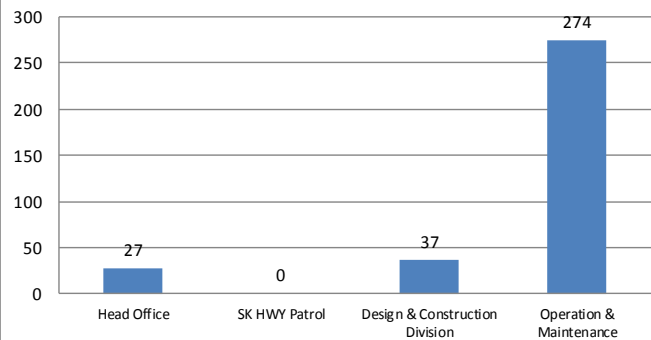
Arm

6

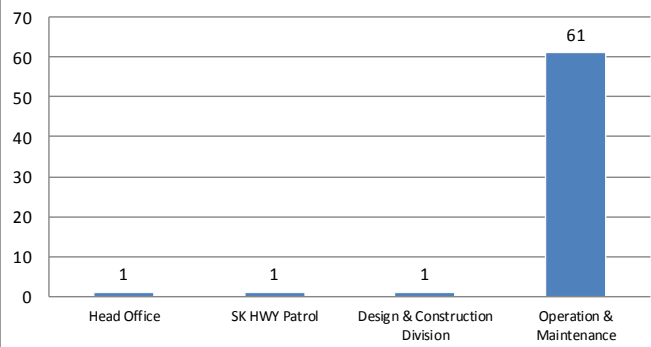
WCB Claims - 2018 YTD



Injury Lost Time - 2018/19 YTD



Property & Equipment - 2018/19 YTD



Status = On Track

(8 out of 12 months)

Path to Success

1. Develop a safety first attitude.
2. Plan the activities and follow the plan.
3. Use "Take 10" tool to identify hazards and have control in place prior to starting task.
4. Take the time necessary to complete the job safely and ask for help if needed.
5. Look out for yourself and others.

Status = On Track

(5 out of 12 months)

Path to Success

The goal is to return employees to work during the recovery period as soon as safely possible to their regular or modified duties.

Accommodated work is available for most injury's.

Status = Not on Track

(5 out of 12 months)

Path to Success

Focus on backing up and contact incidents.

- Complete a walk around your unit before moving. (360 walk around)
- Use a spotter as needed.
- Ensure overhead doors are fully open.
- Ensure box is down
- Ensure overhead line clearance is appropriate.

Following the Preventive Maintenance plan will reduce unplanned equipment failures.

WCB Time Loss Claims - 2

- Pinched hand
- Hurt back cleaning culvert

WCB No Time Loss Claims - 2

- Hurt hand lowering signboard
- Hurt back lifting end gate

Injury 1st Aid - 5

- Trip on pavement drop hurt knee
- Hurt finger with pounder
- Tripped on cement hurt knee
- Debris in eye
- Sprayed with oil

Near Miss - 2

- Vehicle did not stop for flagger (July)
- Vehicle nearly hit flag person in work zone

Theft/Vandalism - 1

- Batteries and fuel stolen 3 units

Preventable P&E Incidents - 12

- Truck box hit overhead door
- Ferry wear plate caught landing
- Contacted oiler in workzone
- Broke three point hitch
- Tandem backed into tandem.
- Hit plastic pole at Time Hortons
- Backed into light pole
- Unintentionally placed hotmix on road
- Backed into private vehicle
- Hood caught fire while welding
- Loader contacted salt shed
- Dent on CVA not previously reported

Unpreventable P&E Incidents - 12

- Wind blew over digital message board (July & Aug)
- Stone chip x 2
- Private vehicle mirror clipped packer
- Trailer tire from private vehicle detached and hit sign truck
- Blew retread x 5
- Private vehicle hit rock in windrow