

Health & Safety Scorecard

December^{YTD} 2018

Take 10's

Goal = 2400 per Year

872^{MHI}
3043^{Fleet}

SOP's Reviewed

Goal = 150 per Year

62

OHC Inspection

Completed as Planned
Goal = 100%

95%

Prevent Box / Door Contact Incidents!

1. Verify path is clear by completing a 360 degree sweep around unit.
2. Verify overhead door is fully open before entering unit.
3. Verify attachments are stowed and tight to the unit.
4. Verify box is down before putting unit into gear.
5. Honk your horn and proceed with caution.

Perfect Days

Per Month
Goal = 20

31

Safety Walks

Completed 18/19
Goal = 150 per Year

101

Orientation's

Completed as Planned
Goal = 100%

7/7

TRIF / LTIF

Incident Frequency
Goal = 5.53 / 2.11

4.4/1.6

Incidents

Reported 18/19
Year to Date

388

Training

Certifications
Awarded This Month

20

 **DANGER**

**WALK AROUND
EQUIPMENT
BEFORE MOVING**

 **DANGER**
BEFORE MOVING...


BOX DOWN ↓ DOOR UP ↑

Zero Incidents...

One Team Working Together

WCB Claims

60

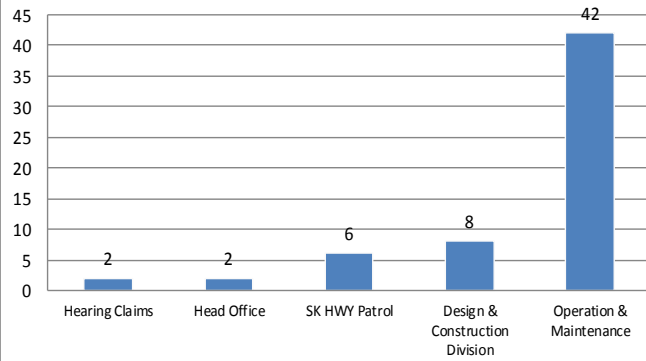
Lost Time

717

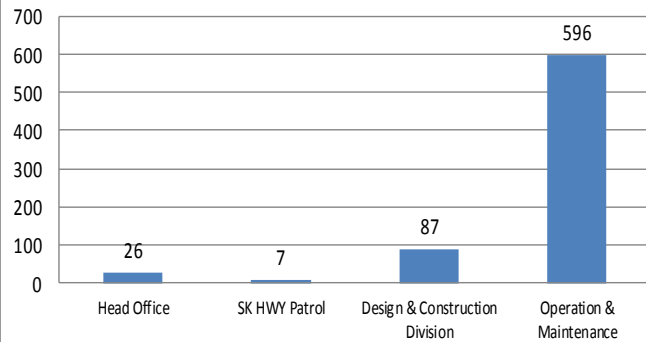
P&E Incidents

126

WCB Claims - 2018 YTD



Injury Lost Time - 2018/19 YTD



Property & Equipment - 2018/19 YTD



Path to Zero Injuries

Prevention is the key...

1. Safety above all else.
2. Plan your activities and follow the plan.
3. Use "Take 10" to identify hazards and have controls in place prior to starting task.
4. Take the time necessary to complete the job safely and ask for help if needed.
5. Look out for yourself and others.

Complete a hazard assessment prior to starting a task.

Path to Zero Lost Time

1. Injury Prevention
2. Injury Accommodation

The goal is to return employees to work during the recovery period as soon as possible to their regular or modified duties.

Accommodated work is available for most injuries.

Path to Zero P&E Incidents

Prevention is the key...

Focus on backing up and contact incidents.

- Complete a walk around your unit before moving.
- Use a spotter as needed.
- Ensure overhead doors are fully open.
- Ensure box is down
- Ensure overhead line clearance is appropriate.

Preventive Maintenance will reduce unplanned equipment failures.

Dangerous Occurrence P&E – 1

D Unit hit light standard

WCB – no lost time claims - 4

Injury to knee after stepping in gopher hole
Injury to shoulder after loading plow blades
Injury to ankle walking down hallway in office
Ambulance was called after employee was ill

Injury 1st Aid – 3

Back injury after loading tires
Slipped on ice injuring elbow, hip and knee
Back injury after lifting winter mix

Preventable P&E Incidents – 24

8 D Unit's hit the building; 5 damaged doors; damage to rotary lights; damage to the Co-op; 2 damages to our shop

Damage to brakes on D Unit
Blade fell on air hose causing damage
D Unit hit cement boulevard damaging mount

Damage to black box on D Unit

D Unit hit private vehicle

2 Damaged front plows on D Unit

Wing arm fell off D Unit

Frog wore down on D Unit

Damage to spinner and cross auger when D Unit slid down ditch on ice

Frame on D Unit pulled apart after hitting a rock

D Unit caught train tracks damaging cylinder mount

Forklift damaged door

Mole board on grader cracked after hitting a rock

Torch burned paint on D Unit

Loader hit D Unit

Unpreventable P&E Incidents – 6

CVA hit deer

2 retread tires blew on D Units

Weld broke on wing on D Unit

Step and light damage to Loader while pushing trees in the ditch

Throttle stuck on Loader; hit D Unit

Near Miss No Injury – 1

Operator turned to miss public vehicle that stopped suddenly

Near Miss No P&E – 1

Operator stopped; public vehicles collided; semi nearly missed operator and public vehicles speeding by at 100 km/hr

Theft – 1

Shop and office were broken into

Late reporting - 3

1 preventable P&E: hit fender on sandvic on grader

2 unpreventable P&E: CVE hit deer, recap tire blew