

# Health & Safety Scorecard

March<sup>YTD</sup> 2019

## Take 10's

Goal = 2400 per Year

**1181<sup>MHI</sup>**

**4114<sup>Fleet</sup>**

## SOP's In Review

Goal = 150 per Year

**100**

## OHC Inspection

Completed as Planned  
Goal = 100%

**93%**

## Perfect Days

Zero Incidents

**16**

## Safety Walks

Completed 18/19  
Goal = 150 per Year

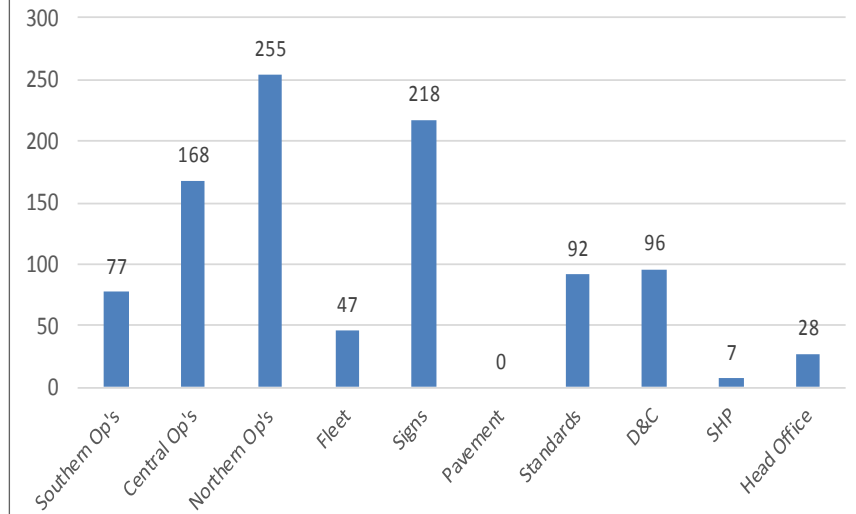
**126**

## Orientation's

Completed as Planned  
Goal = 100%

**6/6**

Lost Days (Midas) - 18/19



## TRIF / LTIF

Incident Frequency

**2.7/2.1**

## Incidents

Reported 18/19  
Year to Date

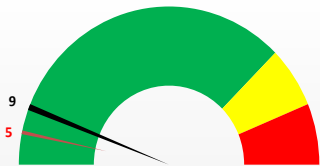
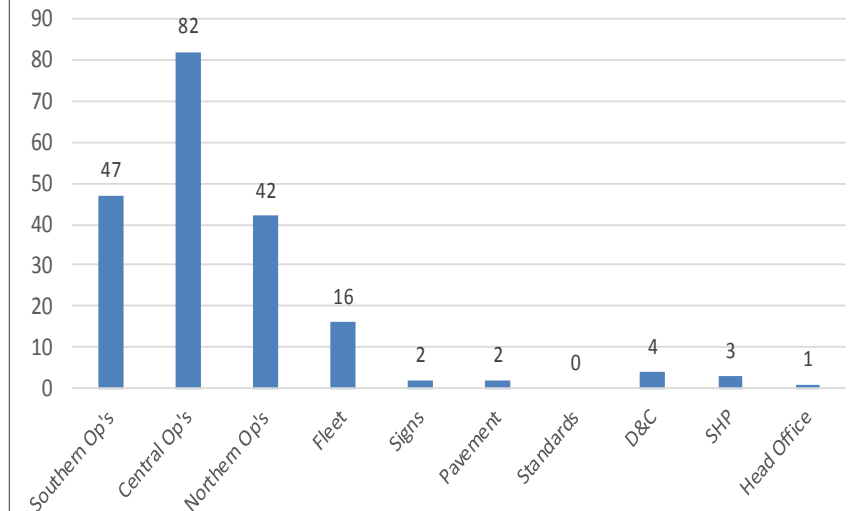
**494**

## Training

Certifications  
Awarded This Month

**12**

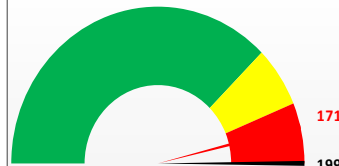
P&E Preventable - 18/19



WCB Claims<sup>est</sup>  
YTD = 9  
3 YR AVG = 5

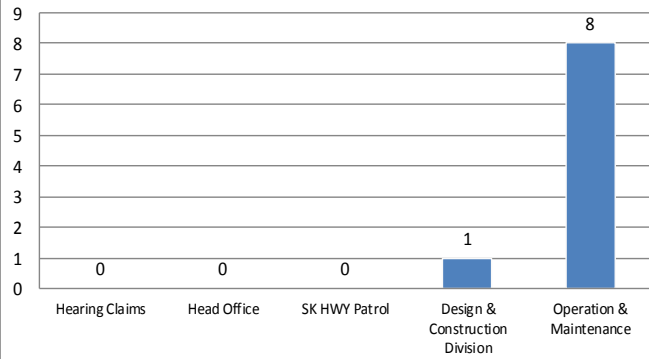


Midas Lost Time<sup>est</sup>  
YTD = 988  
3 YR AVG = 1040



Prop & Equip  
YTD = 199  
3 Yr Avg = 171

WCB Claims - 2019 YTD



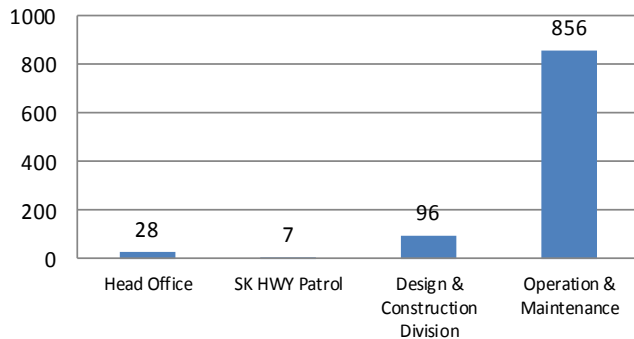
## Path to Zero Injuries

Prevention is the key...

1. Safety above all else.
2. Plan your activities and follow the plan.
3. Use "Take 10" to identify hazards and have controls in place prior to starting task.
4. Take the time necessary to complete the job safely and ask for help if needed.
5. Look out for yourself and others.

**Complete a hazard assessment prior to starting a task.**

Injury Lost Time - 2018/19 YTD



## Path to Zero Lost Time

1. Injury Prevention
2. Injury Accommodation

The goal is to return employees to work during the recovery period as soon as possible to their regular or modified duties.

**Accommodated work is available for most injuries.**

Property & Equipment - 2018/19 YTD



## Path to Zero P&E Incidents

Focus - backing up and contact incidents.

### Typical Backing Up Controls

- Complete a walk around your unit before moving.
- Use a spotter as needed.
- Ensure overhead doors are fully open.
- Ensure box is down
- Ensure overhead line clearance is appropriate.

### Typical Contact Controls

- Mark potential problems spots - no surprises!
- Shops/yards have designated equipment and material locations - no surprises!

**PM will reduce equipment failures.**

### WCB - lost time claims - 0

### WCB - no lost time claims - 3

Injured gums; mouth was hit by socket while using impact wrench and swivel socket  
Injured hand; hit by impact gun and socket  
Lost feeling on left side; may be health related; may not be approved by WCB

### Injury 1<sup>st</sup> Aid - 6

3 slip and fall incidents:

- Fell on back stepping off floor mat walking into the office
- Tripped and fell walking between pallets
- Fell reaching for papers; chair slipped out from under employee

Injury to knee while adjusting brakes on D Unit

Injury to elbow while training

Pulled muscle in back throwing chain to hold bucket on loader

### Preventable P&E Incidents - 12

3 building incidents:

- Wing on D Unit hit overhead door rail backing up
- D Unit tore weather stripping off door backing up
- Exhaust stack on D Unit pulled ducting/tape apart on ceiling exhaust

Frame broke on wing of D Unit

Gas pumped in D Unit

Door hinge broke on D Unit

D Unit slid into snow filled ditch

D Unit drove 100 m over edge of ditch; over corrected, spun 180 degrees and tipped over

D Unit winging on grass; damage to wing, culvert and grass

Loader hit fob gate opener

Heater sparked burning end off cord

CVA stuck in snow; rear tie rod damaged when towed

### Unpreventable P&E Incidents - 3

2 CVA's hit animals (deer and prairie chicken)

Blown tire on D Unit

### Near Miss No Injury - 0

### Near Miss No P&E - 3

Boom on crane got hooked on rigging

Employee was stopped for speeding

Employee was issued speeding ticket

### Theft - 1

Fiske location was robbed; winter jacket of employee was taken

### Late reporting - 1

P&E unpreventable incident: CVA hit deer