

Health & Safety Scorecard

September 2020 Ministry of Highways and Infrastructure

Take 10's
Goal = 10,000 per Year

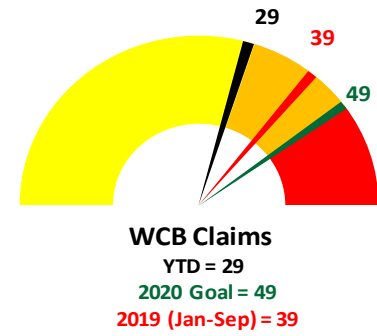
Take 10's 1600
FLRA's 1533
YTD 14,751 (T+F)

SOP's Complete
Goal = 150 Fiscal Year

1
168 YTD

OHC Inspection Completed

Goal = 100%
100% (3rd quarter)



Perfect Days
Goal: Zero Incidents

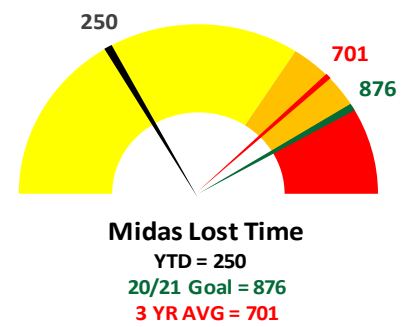
17

Safety Walks Completed 2020/21
Goal = 150 per Year

0
(On hold Due to COVID-19)

Orientation's Completed as Planned
Goal = 100%

21 of 28
7 not registered



***TRIF / *LTIF**
Incident Frequency

2.04/0.78

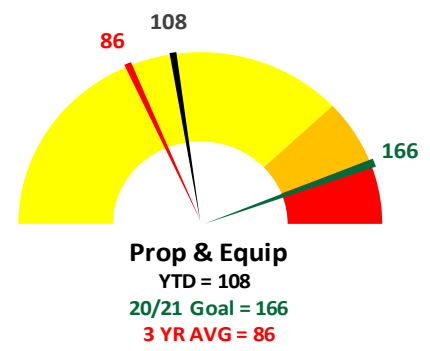
4.55 TRIF GOS 2019 *
4.56 Road Construction Industry TRIF R111
1.26 Engineer Consultants S41 TRIF

Incidents (only preventable)

24
YTD 158

Training (by OHS Team)

16
YTD 198



Work Zone Audit By Contractor
Goal = 150

28
YTD 92

Work Zone Audit By OHS Team
Goal = 40 (J-S)

5
YTD 43

SOP Observations Completed
Goal = 120

0
YTD 8

Definition:
*TRIF = Total Reportable Incident Frequency
*LTIF = Lost Time Incident Frequency
*GOS TRIF = Average for all ministries within GOS.
*(J-S) = July to Sept
*(T+F) = Take 10 + FLRA



Honoring Rick Frank

Many of you already heard the news of Rick Frank passing on September 30, 2020.

Rick started with the Ministry in 2007 with Fleet and moved to the Director-OHS position in 2013.

Rick was recognized as a safety leader not only in MHI, but across government. He was the pioneer of the safety management system we have in MHI today.

Rick will be remembered not only for the work he did in developing the strong safety program we have today but also for building the safety first culture in our ministry.

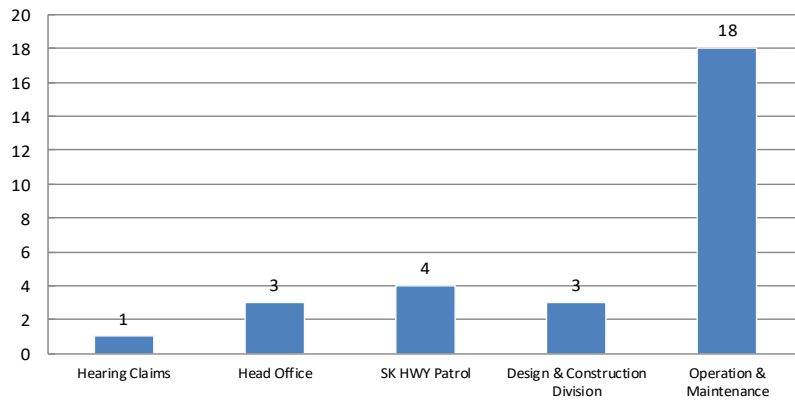
Rick will be missed for his work and professionalism by all of us.



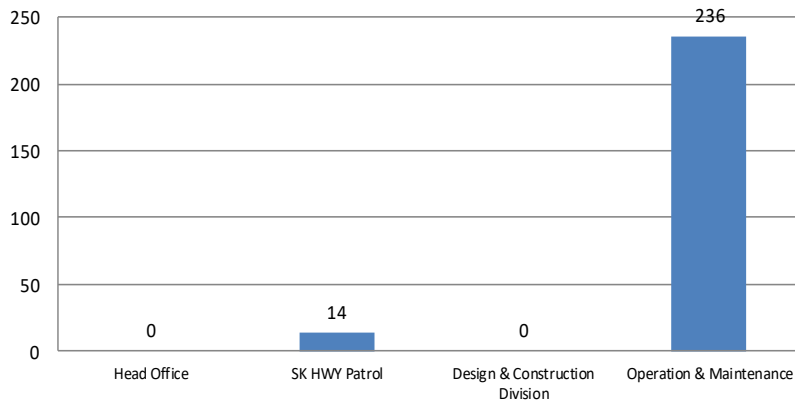
Health & Safety Scorecard

September YTD 2020 Ministry of Highways and Infrastructure

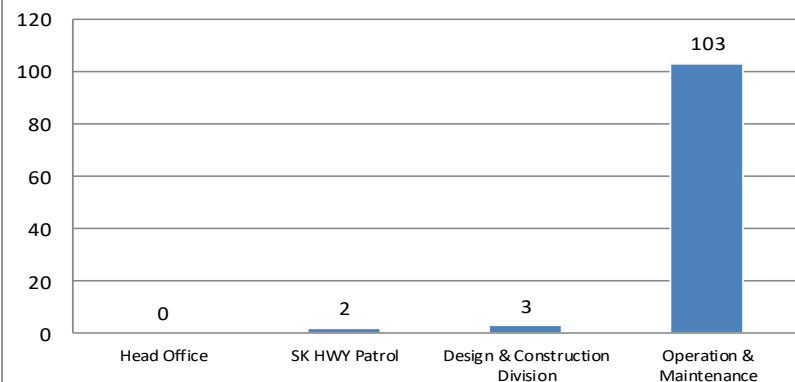
WCB Claims - 2020 YTD



Injury Lost Time - 2020/21 YTD



Property & Equipment - 2020/21 YTD



Path to **Zero** Injuries

Prevention is the key...

1. Plan your activities and follow the plan.
2. Use tools (i.e. Tool Box Meeting and Field Level Risk Assessment) to plan the work and use Take 10 tool, if encounter any hazard during execution to make it safe).
3. Make sure team is train and have all the tools to complete the task safely.
4. Watch for each other during the day, to make sure everyone is working safely.

SAFETY, ENVIRONMENT, QUALITY & PRODUCTION

Complete a hazard assessment prior to starting all tasks.

Path to **Zero** Lost Time

1. Injury Prevention
2. Injury Accommodation

The goal is to prevent any injury by hazard identification and control by planning the work. If incident/injury occurred, the next step to return employees to work during the recovery period as soon as possible to their regular or modified duties as per form 111.
- Contact T&S Team if you have any questions on form 111

Accommodated work is available for most injuries.

Path to **Zero** P&E Incidents

Focus – SOP Observations

Typical Backing Up Controls

- Complete a walk around your unit before moving.
- Use a spotter as needed.
- Ensure overhead doors are fully open.
- Ensure box is down
- Ensure overhead line clearance is appropriate.

Typical Contact Controls

- Mark potential problems spots – no surprises!
- Shops/yards have designated equipment and material locations – no surprises!

Regular Preventive Maintenance (PM) will improve equipment reliability and minimize potential failure during service.

MHI had 24 preventable incidents in the month of September 2020; below is a quick summary:

Dangerous Occurrence – P&E - 1

Pintle hitch broke off trailer when travelling on the highway

WCB Lost Time – 1

Injured wrist, thumb and right side of ribs after falling on highway

WCB – 4 – no lost time

Back incident climbing ladder

Left hip incident slipped off board

Public hit CVA on highway – no injury

Twisted ankle exiting grader

Injury 1st Aid – 2

Foot incident walking on highway

Face incident contact with tree branch

P&E – 16

CVA backed into private vehicle bumper damage

CVA/truck backed into sign damage to side of CVA

CVA/Truck backed into MHI Unit damage to bumper, work platform and glad hand

D Unit backed into MHI Unit damage unknown

Trailer backed into D Unit damage to tommy gate

Personal vehicle backed into MHI Unit damage to quarter panel

CVA/Truck door damage when semi passed on highway in high wind

CVA/Truck contact with private vehicle damage to tail light

CVA/Truck contact with building damage unknown

CVA/Truck contact with building damage to tail light, bumper, rear side door lower hinge and doors

CVA/Truck hit rock damage to side steps

Rim/tire damage on D Unit

Private vehicle went off ramp of Ferry and got caught up on drive cable

Ferry bumped into ramp damage to hand rails, ramp and ferry

Blade on mower sliced open steel

Tire mount bent on trailer

For full incident details please visit:

<G:\Ministry OH&S\Incident Description>

For full Take 10 details please visit:

<G:\Ministry OH&S\Take 10 Summary>