

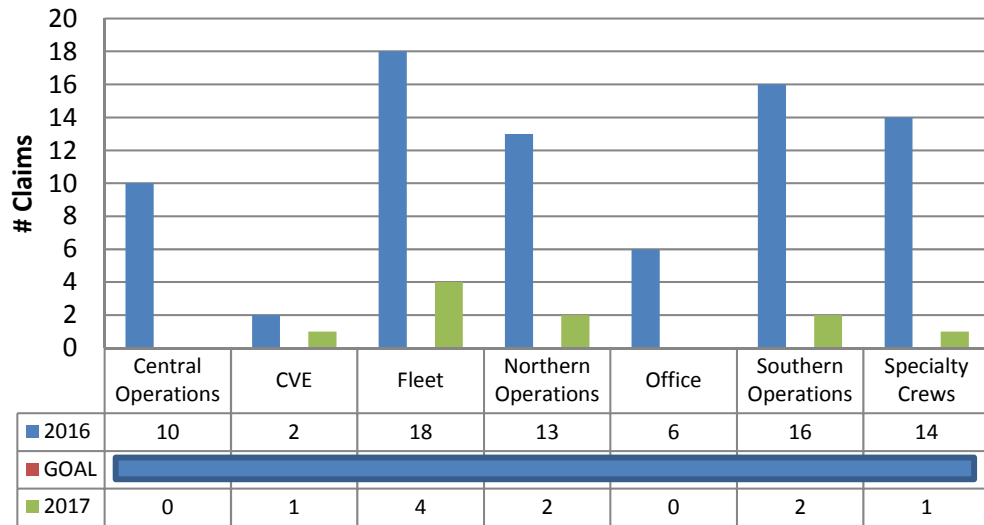
Safety Scorecard – March 2017

WCB Claims Target = TBA; YTD = 10

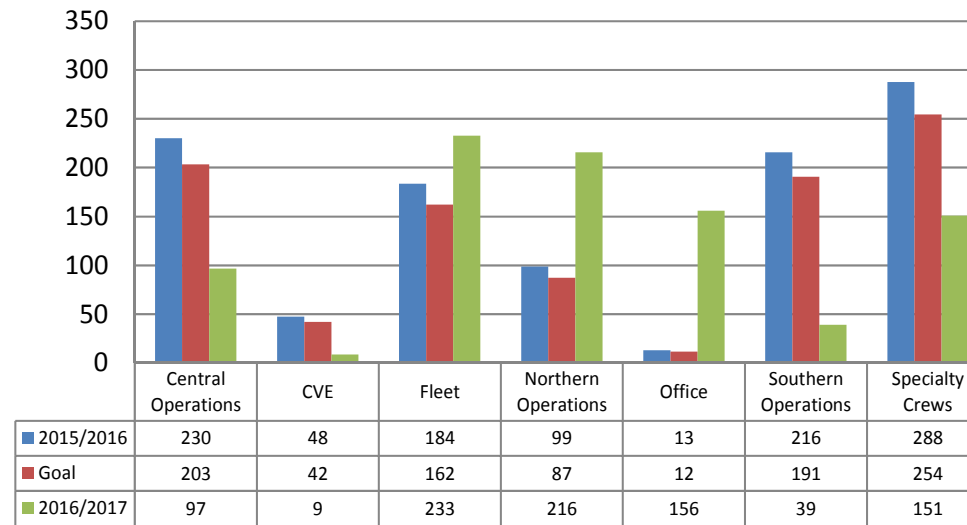
Lost Days Target = 950; YTD = 899
Congratulations on meeting the 16/17 target (24% reduction)

P&E Target = 160; YTD = 164
This represents a 7% reduction compared to 2015/16

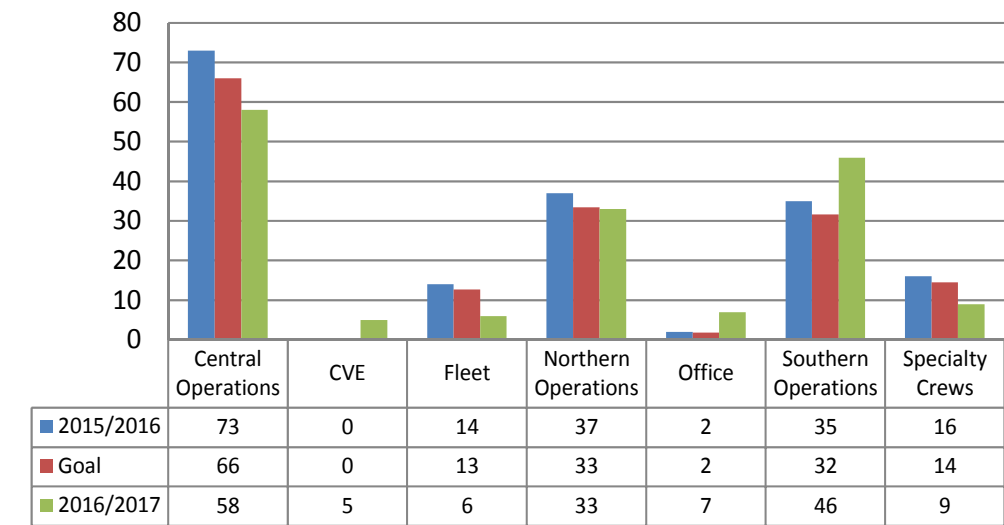
WCB Claims



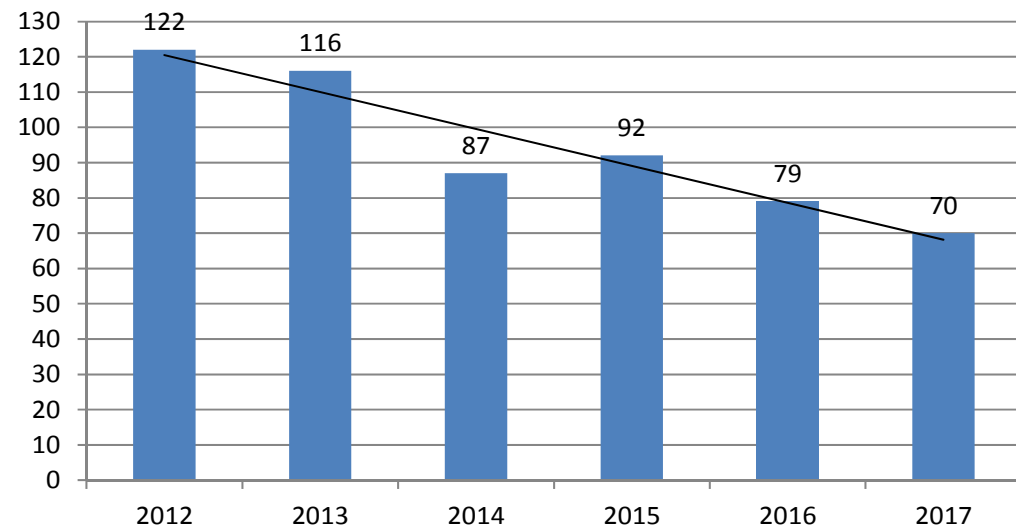
Lost Days



P&E Incidents



WCB Claims - 2017 Target Estimate



The 2017 target is under review and will be announced shortly.

Face/Head/Mouth
11

Eyes/Sight
4

Shoulder
7

Chest/Ribs
4

Back
13

Hip/Leg/Thigh
6

Knee
11



2016/2017

Hearing/Ear
8

Neck
2

Arm/Elbow
3

Abdomen/Side/Groin
3

Wrist
2

Fingers/Hand/Thumb
22

Ankle/Foot/Toes
9

- There were no snow plow incidents in March.
- Welding slag caught rubber seal of overhead door on fire.
- CVA backed into stop sign damaging rear tail light.
- CVA backed into loader.
- D Unit backed up to sand pile damaging filler spout.
- D Unit rolled off ramps hitting overhead door.
- D Unit backed into shop; wind caught mirror.
- D Unit hit man hole cover tearing plow mount off.
- D Unit struck SK Power light pole.
- D Unit dug into asphalt.
- D Unit broke drive shaft when towing truck out of ditch.
- D Unit bent panel box after fueling.
- D Unit broke plow ram when pushing snow.
- D Unit tripped creasing plow plate.
- D Unit damaged rotary lights when driving out of shop.
- D Unit dug in and broke bolts on front plow.
- Grader window broke after being caught in the wind.
- Grader brushed against a private vehicle damaging mirrors.
- Trailer hit MHI Unit causing damage to bumper and lights.
- Wash hose ruptured hitting/bruising employees leg.
- Removing wing, employee bumped head.
- Floor jack slipped, employee bumped head.
- De-pressurized hose struck employee after steaming culvert.
- Employee received stitches after finger got stuck in-between drop pin and tow strap of grader.
- Employee strained lower back when wind caught pallet he was loading.
- Employee injured back when lifting paper.
- Employee injured back when operating bobcat.
- Employee slipped on ice.
- Employee tripped over pallet.

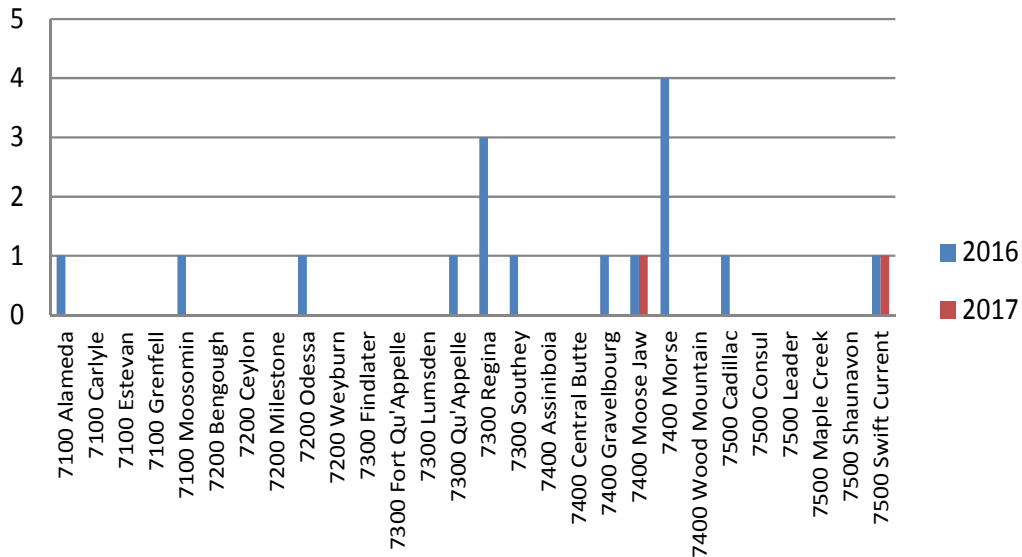
Safety Scorecard Southern Operations – Mar 2017

WCB Claims Goal = TBA YTD = 2

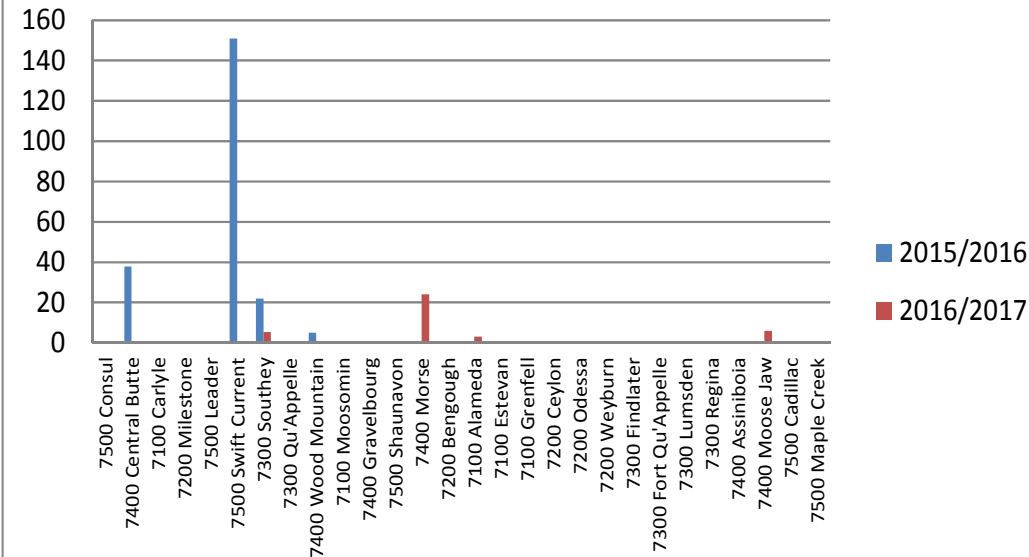
Lost Days Goal = 191 YTD = 39

P & E Goal = 32 YTD = 46

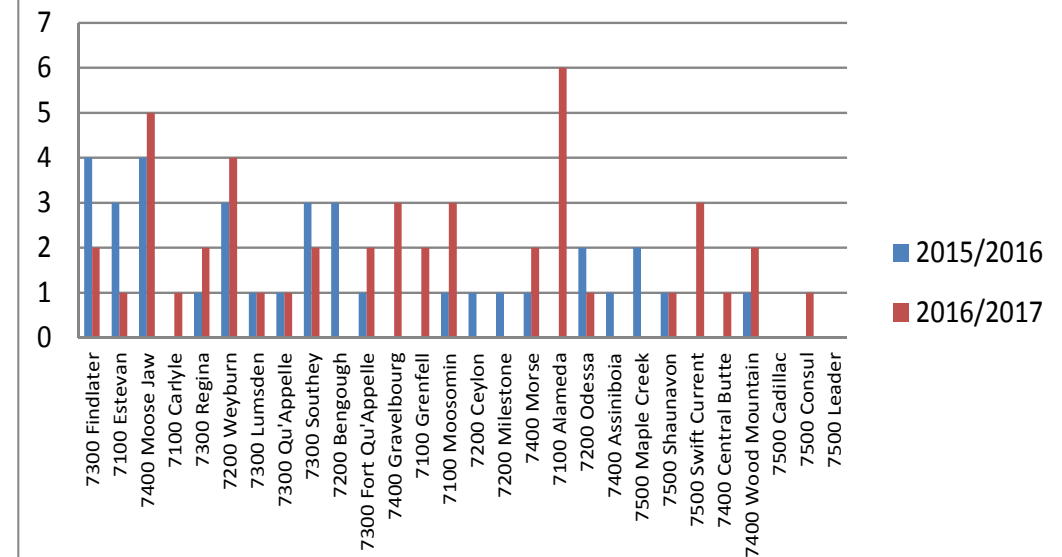
WCB Claims Southern Operations



Lost Days Southern Operations



P&E Southern Operations



2016/2017

	Near Miss - No Injury	Near Miss- P&E	Injury - 1st Aid	Injury - WCB	Mental Health - WCB	Serious Bodily Injury - WCB	Dangerous Occurrence - WCB	Dangerous Occurrence - P&E	Prop/Equip/Enviro	Snow Plow
Central Operations	3	0	5	14	0	0	1	1	58	10
CVE	4	3	4	5	0	0	0	0	5	0
Fleet	0	0	14	24	0	0	0	1	6	0
Northern Operations	2	0	1	13	1	1	0	2	33	4
Office	2	1	3	11	0	0	0	0	7	0
Southern Operations	2	5	8	16	0	0	0	0	46	5
Specialty Crews	2	0	6	15	0	1	0	0	9	0
Total	15	9	41	98	1	2	1	4	164	19

2016/2017

	Injury Category														Injured Area										P&E Contact With Category																									
	Contact w/ Object/Equip	Exposure to Harmful Subst/Enviro	Fires/Explosions	Physical Exertions & Strains	Slips, Trips & Falls	Stress	Theft	Transportation	Violence /Aggression	Other	Abdomen/Stomach/Side/Groin	Ankle/Foot/Toes	Arm/Elbow	Back	Chest/Ribs	Eyes/Sight	Face/Head	Fingers/Hand/Thumb	Hearing/Ear	Hip/Leg/Thigh	Knee	Mental Health	Mouth/Teeth	Multiple	Neck	Other	Shoulder	Wrist	Bridge	Building	Culvert	Deer	Equipment / Materials	Fire	Gate	General Failure	Guard Rail	Meridian	MHI Unit	Other	Post or Light Standard	Private Vehicle - hit us	Private Vehicle - we hit	Road	Semi - hit us	Semi - we hit	Trailer	Train Tracks / Lights	Utility	
Central Operations	4	1	0	7	3	1	0	0	0	0	1	0	1	0	1	0	2	1	2	4	1	0	4	0	0	0	0	1	12	0	0	3	1	1	4	0	0	13	11	2	2	3	9	0	1	2	0	2		
CVE	1	1	0	2	2	0	0	1	2	0	0	0	1	0	0	0	0	0	0	0	0	0	0	4	0	3	0	0	0	1	0	1	0	0	0	0	0	0	0	2	0	1	1	0	0	0	1	0	0	
Fleet	10	1	1	6	10	0	0	0	0	1	2	1	1	4	1	1	4	2	0	1	2	0	1	5	0	0	2	1	0	1	0	0	1	0	0	2	0	0	1	1	1	0	1	0	0	0	0	0	0	0
Northern Operations	7	0	0	4	4	1	1	0	0	0	0	1	0	3	2	0	0	5	0	0	2	0	0	1	0	1	1	0	0	2	0	0	2	0	0	7	0	0	11	8	1	1	1	8	0	0	0	0	0	
Office	3	2	0	7	3	0	0	1	0	1	0	1	1	1	0	0	1	3	1	2	1	0	0	4	0	1	1	1	0	0	0	0	0	0	2	0	0	1	2	0	1	1	3	0	0	0	0	0		
Southern Operations	13	2	0	4	4	0	0	2	0	0	2	0	2	0	0	0	3	7	3	1	1	0	0	4	2	0	1	0	0	8	0	0	3	0	0	6	0	0	6	9	4	4	1	14	1	1	6	0	0	
Specialty Crews	7	3	0	6	4	0	1	1	0	0	1	3	0	2	1	2	2	3	0	0	1	0	0	4	0	0	2	0	0	0	1	4	0	0	1	0	0	1	5	1	3	1	0	3	0	0	0	0		
TOTAL	45	10	1	36	30	2	2	5	2	2	3	9	3	13	4	4	10	22	5	6	11	1	1	26	2	5	7	2	1	24	0	2	13	1	1	22	0	0	33	38	9	12	9	34	4	2	9	0	2	

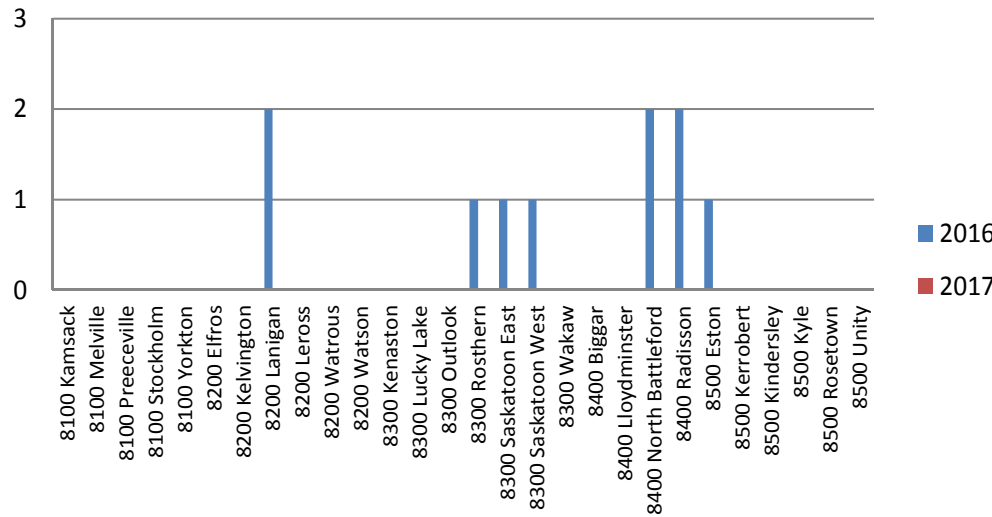
Safety Scorecard Central Operations – Mar 2017

WCB Claims Goal = TBA YTD = nil

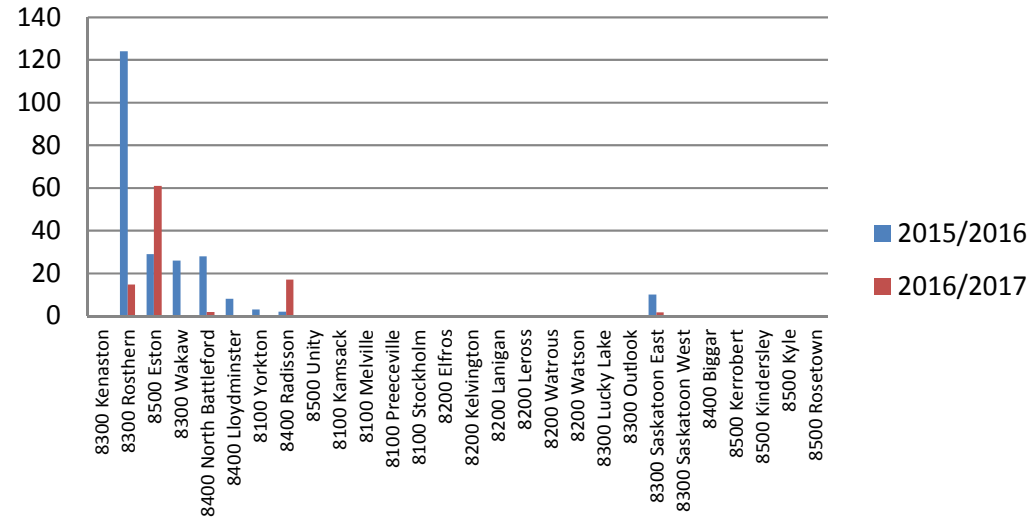
Lost Days Goal = 203 YTD = 97

P & E Goal = 66 YTD = 58

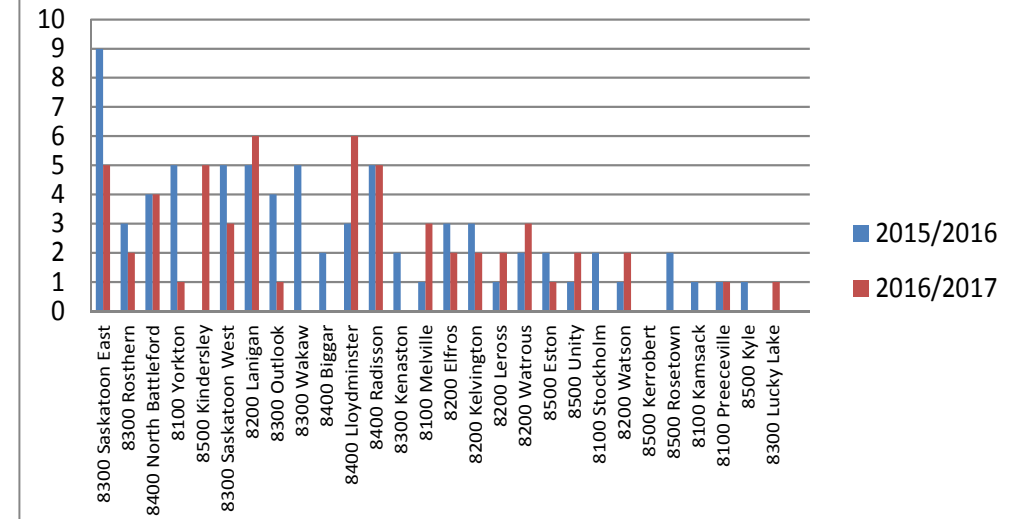
WCB Claims Central Operations



Lost Days Central Operations



P&E Central Operations



2016/2017	Near Miss - No Injury	Near Miss- P&E	Injury - 1st Aid	Injury - WCB	Mental Health - WCB	Serious Bodily Injury - WCB	Dangerous Occurrence - WCB	Dangerous Occurrence - P&E	Prop/Equip/Enviro	Snow Plow
Central Operations	3	0	5	14	0	0	1	1	58	10
CVE	4	3	4	5	0	0	0	0	5	0
Fleet	0	0	14	24	0	0	0	1	6	0
Northern Operations	2	0	1	13	1	1	0	2	33	4
Office	2	1	3	11	0	0	0	0	7	0
Southern Operations	2	5	8	16	0	0	0	0	46	5
Specialty Crews	2	0	6	15	0	1	0	0	9	0
Total	15	9	41	98	1	2	1	4	164	19

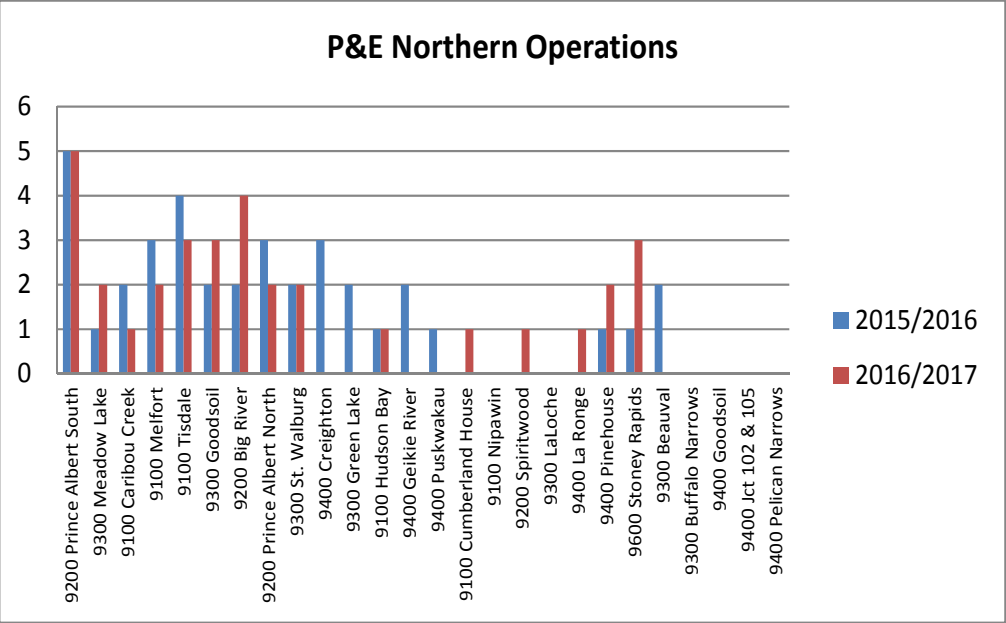
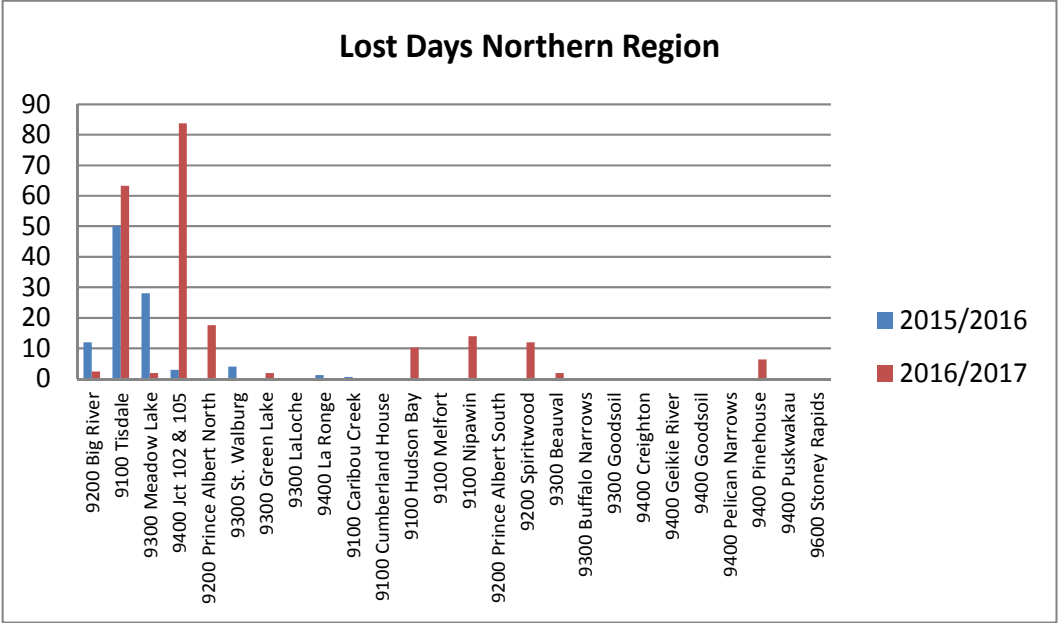
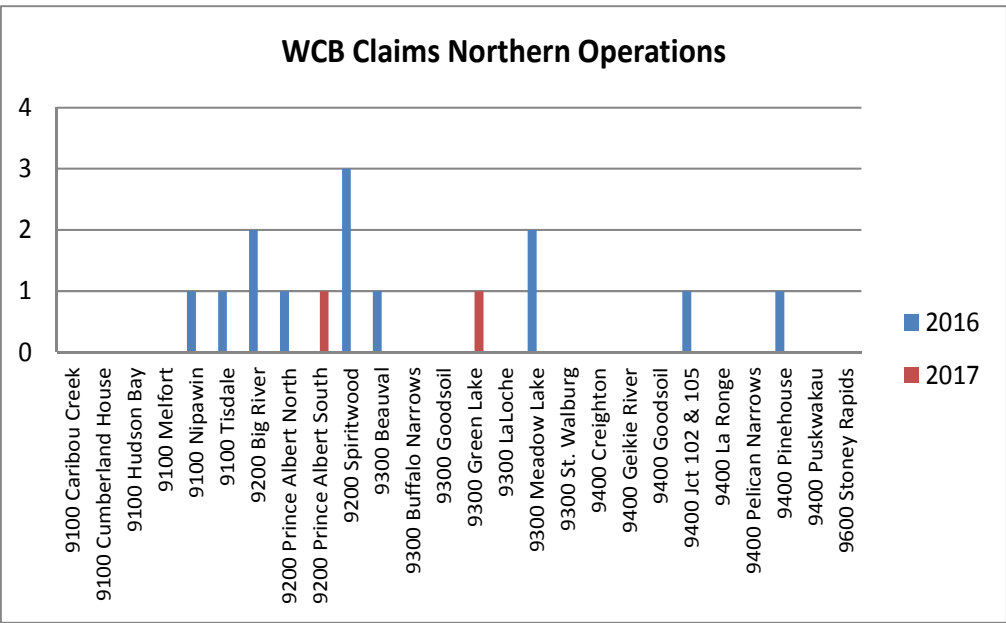
2016/2017	Injury Category														Injured Area										P&E Contact With Category																								
	Contact w/ Object/Equip	Exposure to Harmful Subst/Enviro	Fires/Explosions	Physical Exertions & Strains	Slips, Trips & Falls	Stress	Theft	Transportation	Violence /Aggression	Other	Abdomen/Stomach/Side/Groin	Ankle/Foot/Toes	Arm/Elbow	Back	Chest/Ribs	Eyes/Sight	Face/Head	Fingers/Hand/Thumb	Hearing/Ear	Hip/Leg/Thigh	Knee	Mental Health	Mouth/Teeth	Multiple	Neck	Other	Shoulder	Wrist	Bridge	Building	Culvert	Deer	Equipment / Materials	Fire	Gate	General Failure	Guard Rail	Meridian	MHI Unit	Other	Post or Light Standard	Private Vehicle - hit us	Private Vehicle - we hit	Road	Semi - hit us	Semi - we hit	Trailer	Train Tracks / Lights	Utility
Central Operations	4	1	0	7	3	1	0	0	0	0	1	0	1	0	1	0	2	1	2	4	1	0	4	0	0	0	0	1	12	0	0	3	1	1	4	0	0	13	11	2	2	3	9	0	1	2	0	2	
CVE	1	1	0	2	2	0	0	1	2	0	0	0	1	0	0	0	0	0	0	0	0	0	0	4	0	3	0	0	1	0	1	0	0	0	0	0	0	0	2	0	1	1	0	0	0	1	0	0	
Fleet	10	1	1	6	10	0	0	0	0	1	2	1	1	4	1	1	4	2	0	1	2	0	1	5	0	0	2	1	0	1	0	0	1	0	0	2	0	0	1	1	1	0	1	0	0	0	0	0	
Northern Operations	7	0	0	4	4	1	1	0	0	0	1	0	3	2	0	0	5	0	0	2	0	0	1	0	1	1	0	0	2	0	0	2	0	0	7	0	0	11	8	1	1	1	8	0	0	0	0	0	
Office	3	2	0	7	3	0	0	1	0	1	0	1	1	1	0	0	1	3	1	2	1	0	0	4	0	1	1	1	0	0	0	0	0	0	2	0	0	1	2	0	1	1	3	0	0	0	0	0	
Southern Operations	13	2	0	4	4	0	0	2	0	0	2	0	2	0	0	3	7	3	1	1	0	0	4	2	0	1	0	0	8	0	0	3	0	0	6	0	0	6	9	4	4	1	14	1	1	6	0	0	
Specialty Crews	7	3	0	6	4	0	1	1	0	0	1	3	0	2	1	2	2	3	0	0	1	0	0	4	0	0	2	0	0	0	1	4	0	0	1	0	0	1	5	1	3	1	0	3	0	0	0	0	
TOTAL	45	10	1	36	30	2	2	5	2	2	3	9	3	13	4	4	10	22	5	6	11	1	1	26	2	5	7	2	1	24	0	2	13	1	1	22	0	0	33	38	9	12	9	34	4	2	9	0	2

Safety Scorecard Northern Operations – Mar 2017

WCB Claims Goal = TBA YTD = 2

Lost Days Goal = 87 YTD = 216

P & E Goal = 33 YTD = 33



2016/2017	Near Miss - No Injury	Near Miss- P&E	Injury - 1st Aid	Injury - WCB	Mental Health - WCB	Serious Bodily Injury - WCB	Dangerous Occurrence - WCB	Dangerous Occurrence - P&E	Prop/Equip/Enviro	Snow Plow
Central Operations	3	0	5	14	0	0	1	1	58	10
CVE	4	3	4	5	0	0	0	0	5	0
Fleet	0	0	14	24	0	0	0	1	6	0
Northern Operations	2	0	1	13	1	1	0	2	33	4
Office	2	1	3	11	0	0	0	0	7	0
Southern Operations	2	5	8	16	0	0	0	0	46	5
Specialty Crews	2	0	6	15	0	1	0	0	9	0
Total	15	9	41	98	1	2	1	4	164	19

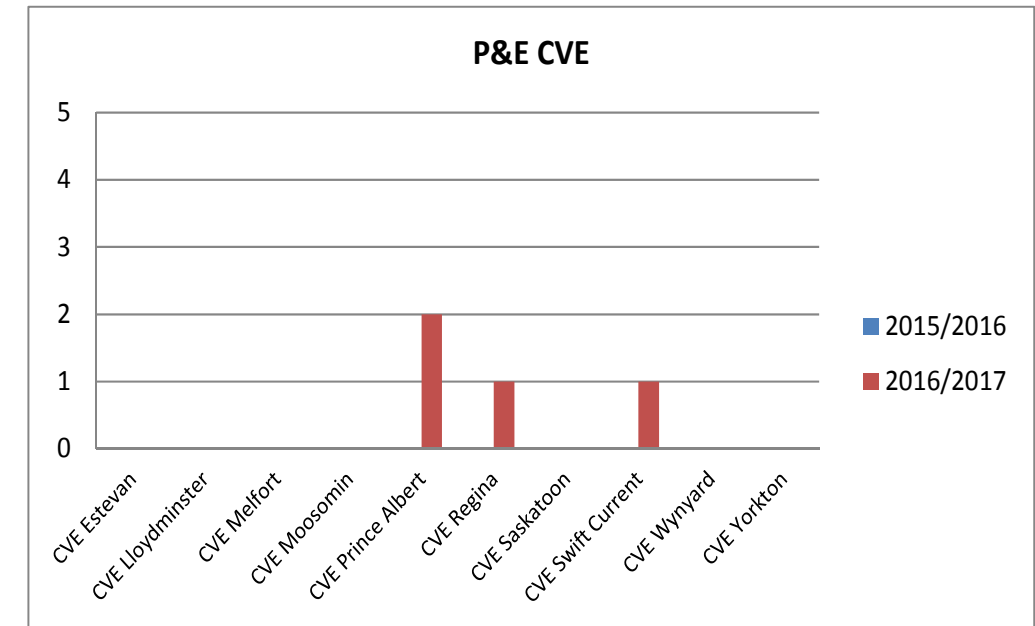
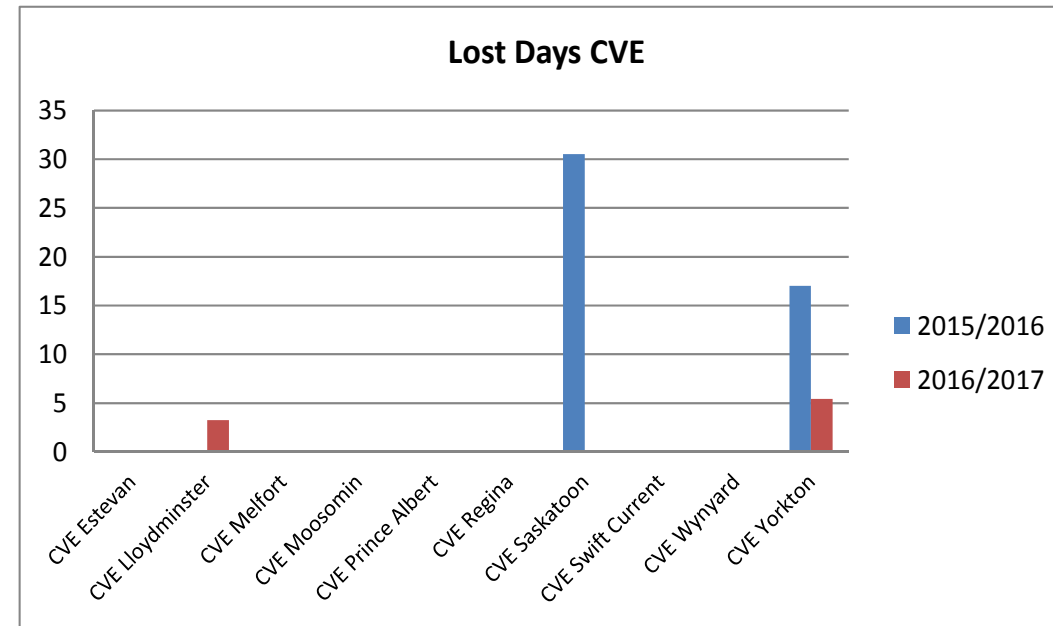
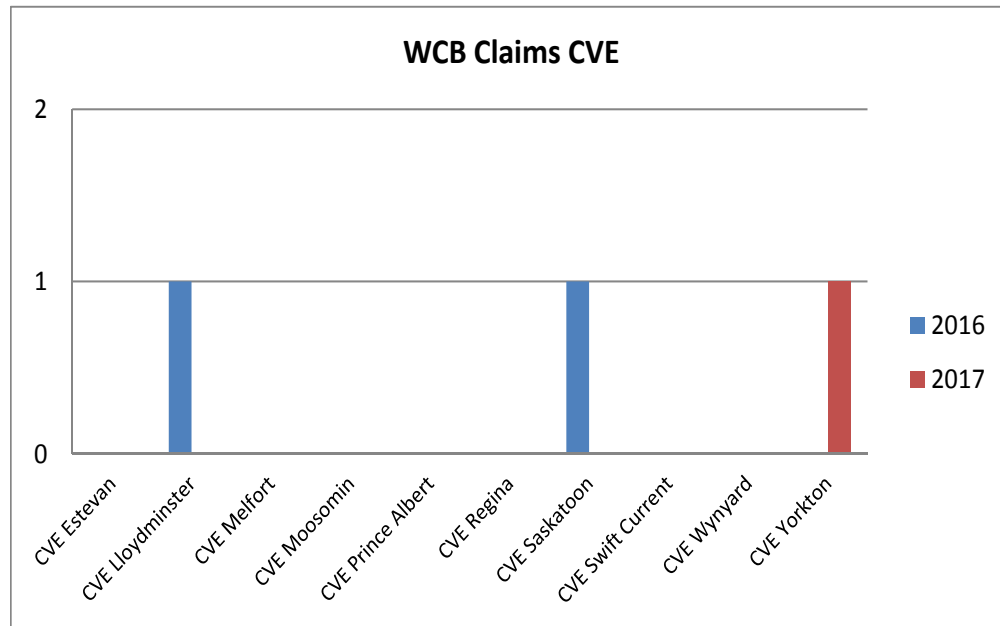
2016/2017	Injury Category										Injured Area										P&E Contact With Category																												
	Contact w/ Object/Equip	Exposure to Harmful Subst/Enviro	Fires/Explosions	Physical Exertions & Strains	Slips, Trips & Falls	Stress	Theft	Transportation	Violence /Aggression	Other	Abdomen/Stomach/Side/Groin	Ankle/Foot/Toes	Arm /Elbow	Back	Chest/Ribs	Eyes/Sight	Face/Head	Fingers/Hand/Thumb	Hearing/Ear	Hip/Leg/Thigh	Knee	Mental Health	Mouth/Teeth	Multiple	Neck	Other	Shoulder	Wrist	Bridge	Building	Culvert	Deer	Equipment / Materials	Fire	Gate	General Failure	Guard Rail	Meridian	MHI Unit	Other	Post or Light Standard	Private Vehicle - hit us	Private Vehicle - we hit	Road	Semi - hit us	Semi - we hit	Trailer	Train Tracks / Lights	Utility
Central Operations	4	1	0	7	3	1	0	0	0	0	1	0	1	0	1	0	2	1	2	4	1	0	4	0	0	0	0	1	12	0	0	3	1	1	4	0	0	13	11	2	2	3	9	0	1	2	0	2	
CVE	1	1	0	2	2	0	0	1	2	0	0	0	1	0	0	0	0	0	0	0	0	0	4	0	3	0	0	1	1	0	0	0	0	0	0	0	0	0	2	0	1	1	0	0	0	1	0	0	
Fleet	10	1	1	6	10	0	0	0	0	1	2	1	1	4	1	1	4	2	0	1	2	0	1	5	0	0	2	1	0	1	0	0	1	0	0	2	0	0	1	1	1	0	1	0	0	0	0	0	
Northern Operations	7	0	0	4	4	1	1	0	0	0	1	0	3	2	0	0	5	0	0	2	0	0	1	0	1	1	0	2	0	0	2	0	0	7	0	0	11	8	1	1	1	8	0	0	0	0	0		
Office	3	2	0	7	3	0	0	1	0	1	0	1	1	1	0	0	1	3	1	2	1	0	4	0	1	1	1	0	0	0	0	0	0	2	0	0	1	2	0	1	1	3	0	0	0	0	0		
Southern Operations	13	2	0	4	4	0	0	2	0	0	2	0	2	0	0	3	7	3	1	1	0	0	4	2	0	1	0	8	0	0	3	0	0	6	0	0	6	9	4	4	1	14	1	1	6	0	0		
Specialty Crews	7	3	0	6	4	0	1	1	0	0	1	3	0	2	1	2	3	0	0	1	0	0	4	0	0	2	0	0	0	1	4	0	0	1	0	0	1	5	1	3	1	0	3	0	0	0	0		
TOTAL	45	10	1	36	30	2	2	5	2	2	3	9	3	13	4	4	10	22	5	6	11	1	1	26	2	5	7	2	1	24	0	2	13	1	1	22	0	0	33	38	9	12	9	34	4	2	9	0	2

Safety Scorecard CVE – Mar 2017

WCB Claims Goal = TBA YTD = 1

Lost Days Goal = 42 YTD = 9

P & E Goal = 0 YTD = 5



2016/2017	Injury Category									
	Near Miss - No Injury	Near Miss- P&E	Injury - 1st Aid	Injury - WCB	Mental Health - WCB	Serious Bodily Injury - WCB	Dangerous Occurrence - WCB	Dangerous Occurrence - P&E	Prop/Equip/Enviro	Snow Plow
Central Operations	3	0	5	14	0	0	1	1	58	10
CVE	4	3	4	5	0	0	0	0	5	0
Fleet	0	0	14	24	0	0	0	1	6	0
Northern Operations	2	0	1	13	1	1	0	2	33	4
Office	2	1	3	11	0	0	0	0	7	0
Southern Operations	2	5	8	16	0	0	0	0	46	5
Specialty Crews	2	0	6	15	0	1	0	0	9	0
Total	15	9	41	98	1	2	1	4	164	19

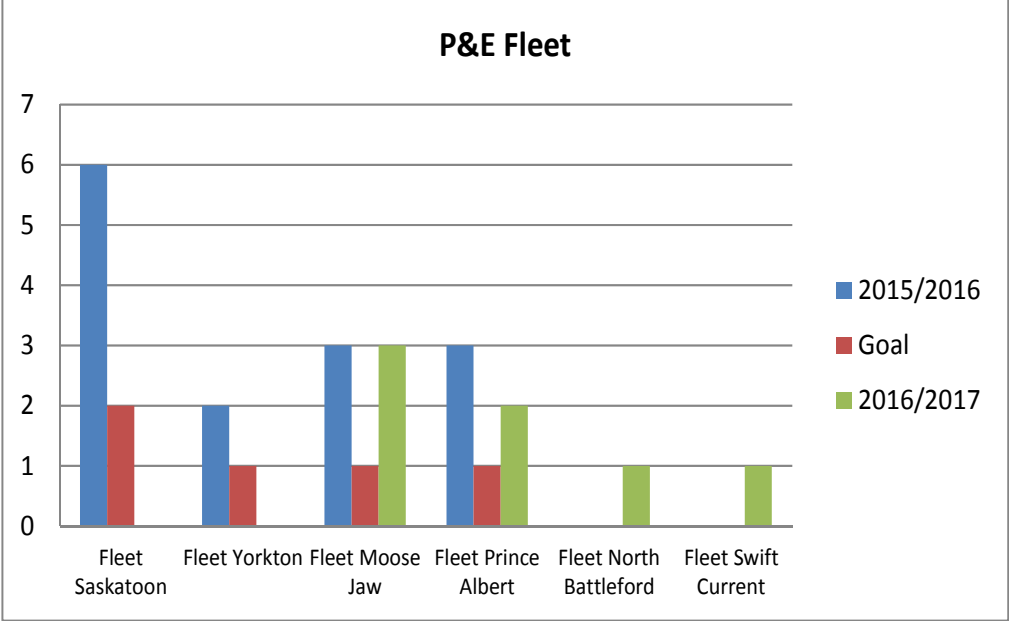
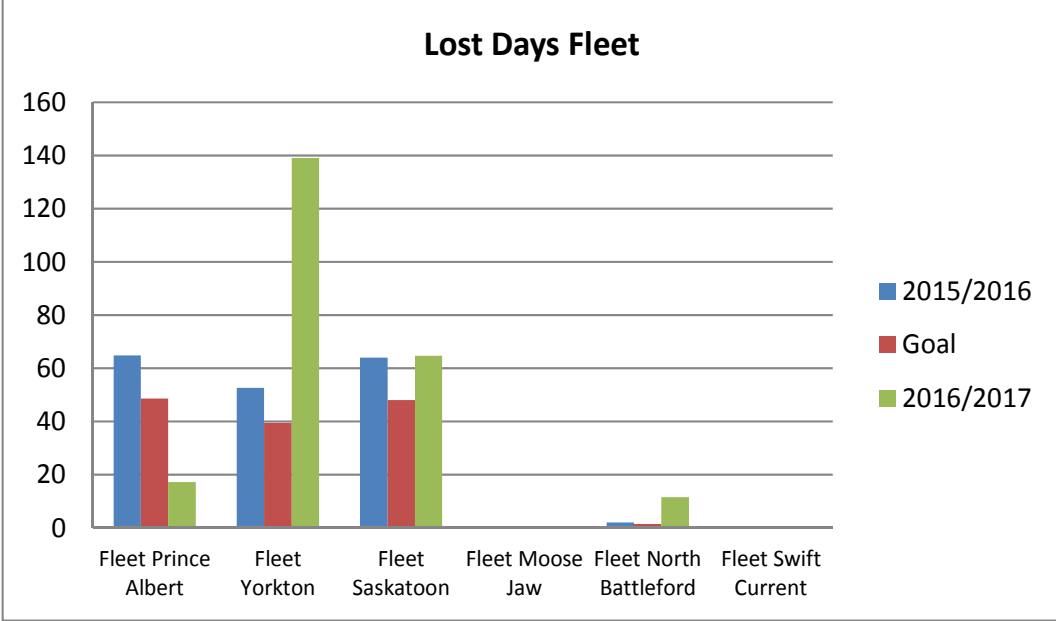
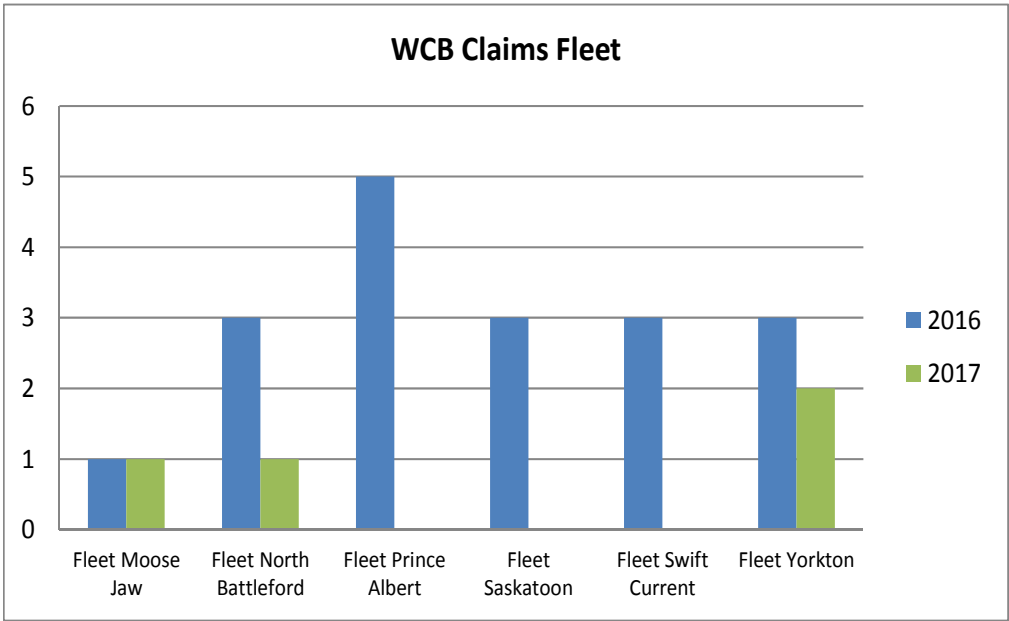
2016/2017	Injury Category															Injured Area															P&E Contact With Category																		
	Contact w/ Object/Equip	Exposure to Harmful Subst/Enviro	Fires/Explosions	Physical Exertions & Strains	Slips, Trips & Falls	Stress	Theft	Transportation	Violence /Aggression	Other	Abdomen/Stomach/Side/Groin	Ankle/Foot/Toes	Arm/Elbow	Back	Chest/Ribs	Eyes/Sight	Face/Head	Fingers/Hand/Thumb	Hearing/Ear	Hip/Leg/Thigh	Knee	Mental Health	Mouth/Teeth	Multiple	Neck	Other	Shoulder	Wrist	Bridge	Building	Culvert	Deer	Equipment / Materials	Fire	Gate	General Failure	Guard Rail	Meridian	MHI Unit	Other	Post or Light Standard	Private Vehicle - hit us	Private Vehicle - we hit	Road	Semi - hit us	Semi - we hit	Trailer	Train Tracks / Lights	Utility
Central Operations	4	1	0	7	3	1	0	0	0	0	1	0	1	0	1	0	2	1	2	4	1	0	4	0	0	0	0	1	12	0	0	3	1	1	4	0	0	13	11	2	2	3	9	0	1	2	0	2	
CVE	1	1	0	2	2	0	0	1	2	0	0	1	0	0	0	0	0	0	0	0	0	0	4	0	3	0	0	1	1	0	0	0	0	0	0	0	0	2	0	1	1	0	0	0	1	0	0		
Fleet	10	1	1	6	10	0	0	0	0	1	2	1	1	4	1	1	4	2	0	1	2	0	1	5	0	0	2	1	0	1	0	0	1	0	0	2	0	0	1	1	1	0	1	0	0	0	0	0	
Northern Operations	7	0	0	4	4	1	1	0	0	0	1	0	3	2	0	0	5	0	0	2	0	0	1	0	1	1	0	0	2	0	0	2	0	0	7	0	0	11	8	1	1	1	8	0	0	0	0	0	
Office	3	2	0	7	3	0	0	1	0	1	0	1	1	1	0	0	1	3	1	2	1	0	0	4	0	1	1	1	0	0	0	0	0	0	2	0	0	1	2	0	1	1	3	0	0	0	0	0	
Southern Operations	13	2	0	4	4	0	0	2	0	0	2	0	2	0	0	3	7	3	1	1	0	0	4	2	0	1	0	0	8	0	0	3	0	0	6	0	0	6	9	4	4	1	14	1	1	6	0	0	
Specialty Crews	7	3	0	6	4	0	1	1	0	0	1	3	0	2	1	2	3	0	0	1	0	0	4	0	0	2	0	0	0	0	0	1	4	0	0	1	0	0	1	5	1	3	1	0	3	0	0	0	0
TOTAL	45	10	1	36	30	2	2	5	2	2	3	9	3	13	4	4	10	22	5	6	11	1	1	26	2	5	7	2	1	24	0	2	13	1	1	22	0	0	33	38	9	12	9	34	4	2	9	0	2

Safety Scorecard Fleet – Mar 2017

WCB Claims Goal = TBA YTD = 4

Lost Days Goal = 162 YTD = 233

P & E Goal = 13 YTD = 6



2016/2017	Near Miss - No Injury	Near Miss- P&E	Injury - 1st Aid	Injury - WCB	Mental Health - WCB	Serious Bodily Injury - WCB	Dangerous Occurrence - WCB	Dangerous Occurrence - P&E	Prop/Equip/Enviro	Snow Plow
Central Operations	3	0	5	14	0	0	1	1	58	10
CVE	4	3	4	5	0	0	0	0	5	0
Fleet	0	0	14	24	0	0	0	1	6	0
Northern Operations	2	0	1	13	1	1	0	2	33	4
Office	2	1	3	11	0	0	0	0	7	0
Southern Operations	2	5	8	16	0	0	0	0	46	5
Specialty Crews	2	0	6	15	0	1	0	0	9	0
Total	15	9	41	98	1	2	1	4	164	19

2016/2017	Injury Category										Injured Area										P&E Contact With Category																												
	Contact w/ Object/Equip	Exposure to Harmful Subst/Enviro	Fires/Explosions	Physical Exertions & Strains	Slips, Trips & Falls	Stress	Theft	Transportation	Violence /Aggression	Other	Abdomen/Stomach/Side/Groin	Ankle/Foot/Toes	Arm/Elbow	Back	Chest/Ribs	Eyes/Sight	Face/Head	Fingers/Hand/Thumb	Hearing/Ear	Hip/Leg/Thigh	Knee	Mental Health	Mouth/Teeth	Multiple	Neck	Other	Shoulder	Wrist	Bridge	Building	Culvert	Deer	Equipment / Materials	Fire	Gate	General Failure	Guard Rail	Meridian	MHI Unit	Other	Post or Light Standard	Private Vehicle - hit us	Private Vehicle - we hit	Road	Semi - hit us	Semi - we hit	Trailer	Train Tracks / Lights	Utility
Central Operations	4	1	0	7	3	1	0	0	0	0	1	0	1	0	1	0	0	2	1	2	4	1	0	4	0	0	0	0	1	12	0	0	3	1	1	4	0	0	13	11	2	2	3	9	0	1	2	0	2
CVE	1	1	0	2	2	0	0	1	2	0	0	1	0	0	0	0	0	0	0	0	0	0	0	4	0	3	0	0	1	0	1	0	0	0	0	0	0	0	0	2	0	1	1	0	0	0	1	0	0
Fleet	10	1	1	6	10	0	0	0	0	1	2	1	4	1	1	4	2	0	1	2	0	1	5	0	0	2	1	0	1	0	0	1	0	0	2	0	0	1	1	1	0	1	0	0	0	0	0	0	0
Northern Operations	7	0	0	4	4	1	1	0	0	0	1	0	3	2	0	0	5	0	0	2	0	0	1	0	1	1	0	0	2	0	0	2	0	0	7	0	0	11	8	1	1	1	8	0	0	0	0	0	
Office	3	2	0	7	3	0	0	1	0	1	1	1	1	0	0	1	3	1	2	1	0	0	4	0	1	1	1	0	0	0	0	0	0	2	0	0	1	2	0	1	1	3	0	0	0	0	0		
Southern Operations	13	2	0	4	4	0	0	2	0	0	2	0	2	0	0	3	7	3	1	1	0	0	4	2	0	1	0	0	8	0	0	3	0	0	6	0	0	6	9	4	4	1	14	1	1	6	0	0	
Specialty Crews	7	3	0	6	4	0	1	1	0	0	1	3	0	2	1	2	2	3	0	0	1	0	0	4	0	0	2	0	0	0	1	4	0	0	1	0	0	1	5	1	3	1	0	3	0	0	0	0	
TOTAL	45	10	1	36	30	2	2	5	2	2	3	9	3	13	4	4	10	22	5	6	11	1	1	26	2	5	7	2	1	24	0	2	13	1	1	22	0	0	33	38	9	12	9	34	4	2	9	0	2

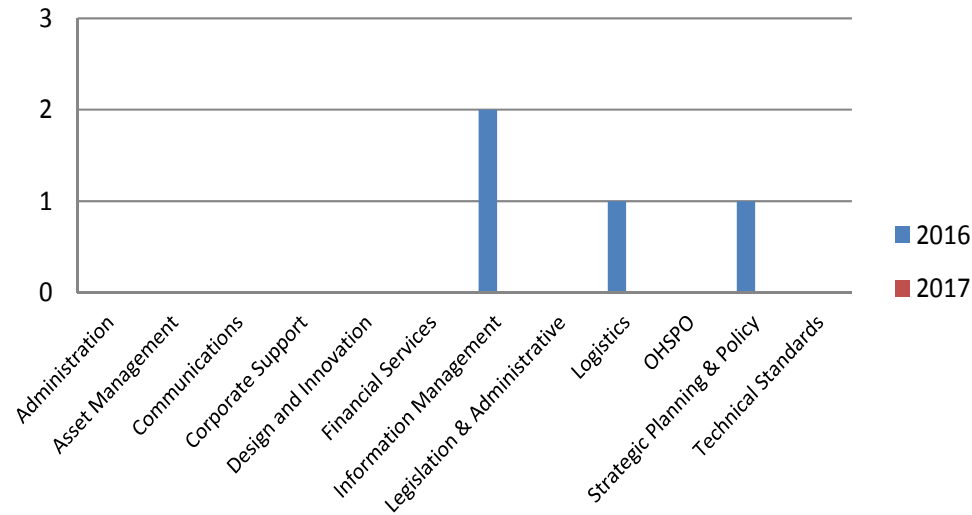
Safety Scorecard Office – Mar 2017

WCB Claims Goal = TBA YTD = nil

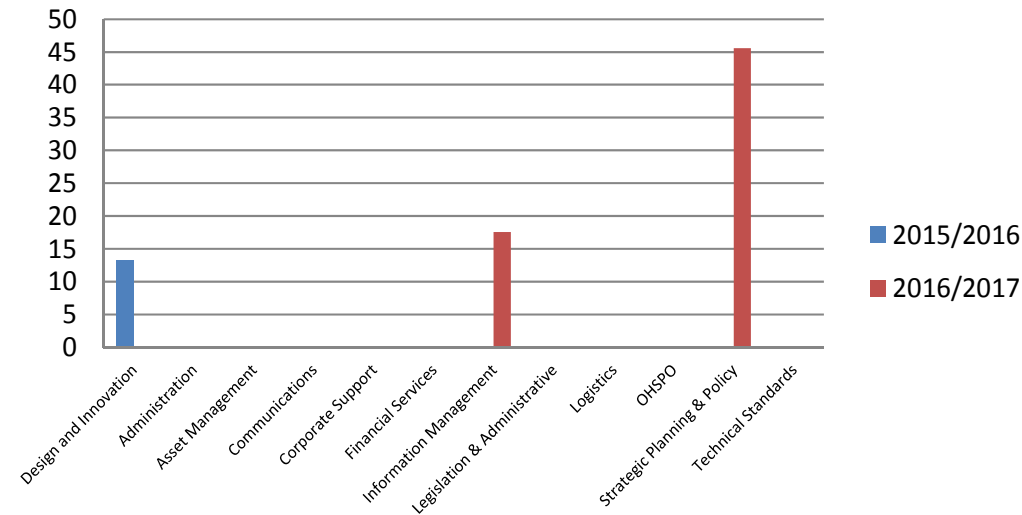
Lost Days Goal = 12 YTD = 156

P & E Goal = 2 YTD = 7

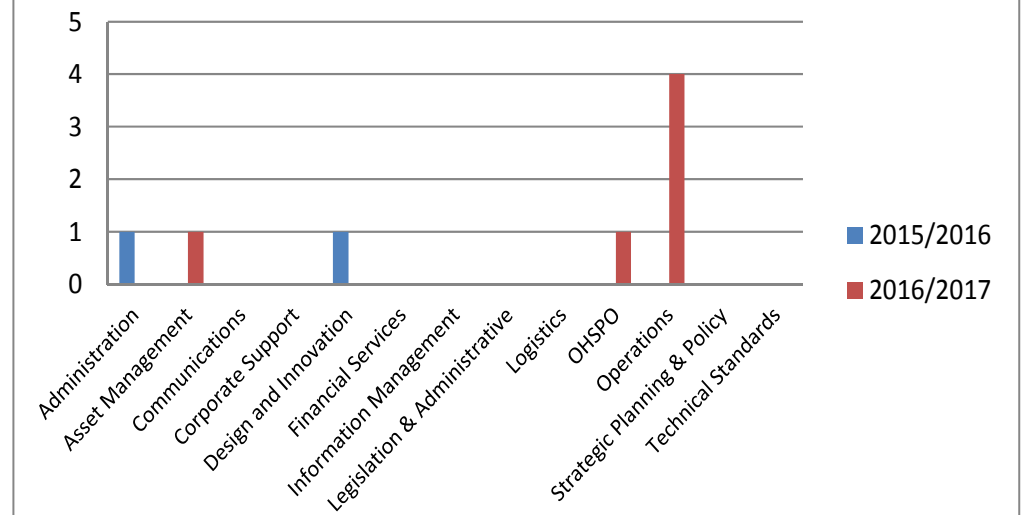
WCB Claims Office



Lost Days Office



P&E Office



2016/2017	Near Miss - No Injury	Near Miss- P&E	Injury - 1st Aid	Injury - WCB	Mental Health - WCB	Serious Bodily Injury - WCB	Dangerous Occurrence - WCB	Dangerous Occurrence - P&E	Prop/Equip/Enviro	Snow Plow
Central Operations	3	0	5	14	0	0	1	1	58	10
CVE	4	3	4	5	0	0	0	0	5	0
Fleet	0	0	14	24	0	0	0	1	6	0
Northern Operations	2	0	1	13	1	1	0	2	33	4
Office	2	1	3	11	0	0	0	0	7	0
Southern Operations	2	5	8	16	0	0	0	0	46	5
Specialty Crews	2	0	6	15	0	1	0	0	9	0
Total	15	9	41	98	1	2	1	4	164	19

2016/2017	Injury Category											Injured Area											P&E Contact With Category																										
	Contact w/ Object/Equip	Exposure to Harmful Subst/Enviro	Fires/Explosions	Physical Exertions & Strains	Slips, Trips & Falls	Stress	Theft	Transportation	Violence /Aggression	Other	Abdomen/Stomach/Side/Groin	Ankle/Foot/Toes	Arm/Elbow	Back	Chest/Ribs	Eyes/Sight	Face/Head	Fingers/Hand/Thumb	Hearing/Ear	Hip/Leg/Thigh	Knee	Mental Health	Mouth/Teeth	Multiple	Neck	Other	Shoulder	Wrist	Bridge	Building	Culvert	Deer	Equipment / Materials	Fire	Gate	General Failure	Guard Rail	Meridian	MHI Unit	Other	Post or Light Standard	Private Vehicle - hit us	Private Vehicle - we hit	Road	Semi - hit us	Semi - we hit	Trailer	Train Tracks / Lights	Utility
Central Operations	4	1	0	7	3	1	0	0	0	0	1	0	1	0	1	0	2	1	2	4	1	0	4	0	0	0	0	1	12	0	0	3	1	1	4	0	0	13	11	2	2	3	9	0	1	2	0	2	
CVE	1	1	0	2	2	0	0	1	2	0	0	1	0	0	0	0	0	0	0	0	0	0	4	0	3	0	0	1	1	0	0	0	0	0	0	0	0	0	2	0	1	1	0	0	0	1	0	0	
Fleet	10	1	1	6	10	0	0	0	0	1	2	1	1	4	1	1	4	2	0	1	2	0	1	5	0	0	2	1	0	1	0	0	1	0	0	2	0	0	1	1	1	0	1	0	0	0	0	0	
Northern Operations	7	0	0	4	4	1	1	0	0	0	1	0	3	2	0	0	5	0	0	2	0	0	1	0	1	1	0	0	2	0	0	2	0	0	7	0	0	11	8	1	1	1	8	0	0	0	0	0	
Office	3	2	0	7	3	0	0	1	0	1	0	1	1	1	0	0	1	3	1	2	1	0	0	4	0	1	1	1	0	0	0	0	0	0	2	0	0	1	2	0	1	1	3	0	0	0	0	0	
Southern Operations	13	2	0	4	4	0	0	2	0	0	2	0	2	0	0	3	7	3	1	1	0	0	4	2	0	1	0	0	8	0	0	3	0	0	6	0	0	6	9	4	4	1	14	1	1	6	0	0	
Specialty Crews	7	3	0	6	4	0	1	1	0	0	1	3	0	2	1	2	2	3	0	0	1	0	0	4	0	0	2	0	0	0	1	4	0	0	1	0	0	1	5	1	3	1	0	3	0	0	0	0	
TOTAL	45	10	1	36	30	2	2	5	2	2	3	9	3	13	4	4	10	22	5	6	11	1	1	26	2	5	7	2	1	24	0	2	13	1	1	22	0	0	33	38	9	12	9	34	4	2	9	0	2

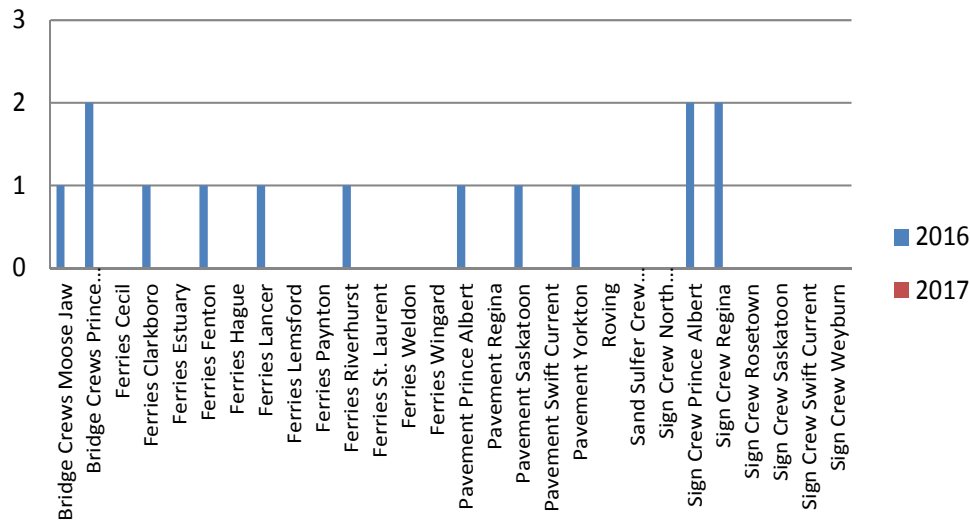
Safety Scorecard Specialty Crews – Mar 2017

WCB Claims Goal = TBA YTD = 2

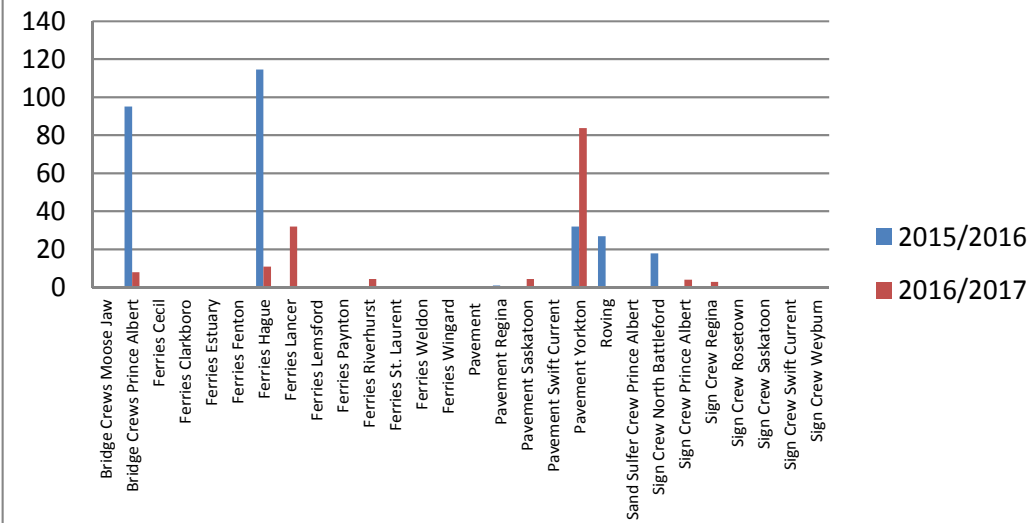
Lost Days Goal = 254 YTD = 151

P & E Goal = 14 YTD = 9

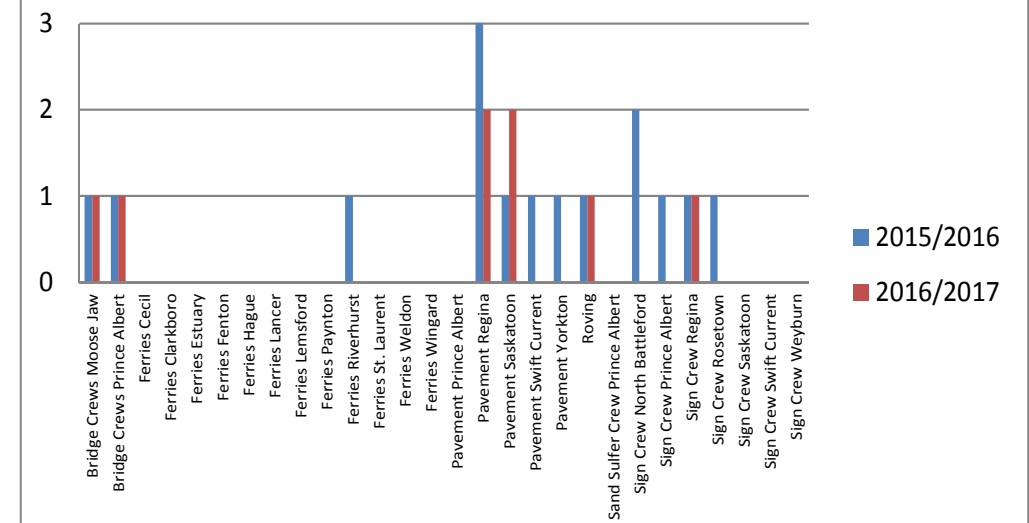
WCB Claims Specialty Groups



Lost Days Specialty Crews



P&E Specialty Crews



2016/2017	Near Miss - No Injury	Near Miss- P&E	Injury - 1st Aid	Injury - WCB	Mental Health - WCB	Serious Bodily Injury - WCB	Dangerous Occurrence - WCB	Dangerous Occurrence - P&E	Prop/Equip/Enviro	Snow Plow
Central Operations	3	0	5	14	0	0	1	1	58	10
CVE	4	3	4	5	0	0	0	0	5	0
Fleet	0	0	14	24	0	0	0	1	6	0
Northern Operations	2	0	1	13	1	1	0	2	33	4
Office	2	1	3	11	0	0	0	0	7	0
Southern Operations	2	5	8	16	0	0	0	0	46	5
Specialty Crews	2	0	6	15	0	1	0	0	9	0
Total	15	9	41	98	1	2	1	4	164	19

2016/2017	Injury Category														Injured Area										P&E Contact With Category																								
	Contact w/ Object/Equip	Exposure to Harmful Subst/Enviro	Fires/Explosions	Physical Exertions & Strains	Slips, Trips & Falls	Stress	Theft	Transportation	Violence /Aggression	Other	Abdomen/Stomach/Side/Groin	Ankle/Foot/Toes	Arm/Elbow	Back	Chest/Ribs	Eyes/Sight	Face/Head	Fingers/Hand/Thumb	Hearing/Ear	Hip/Leg/Thigh	Knee	Mental Health	Mouth/Teeth	Multiple	Neck	Other	Shoulder	Wrist	Bridge	Building	Culvert	Deer	Equipment / Materials	Fire	Gate	General Failure	Guard Rail	Meridian	MHI Unit	Other	Post or Light Standard	Private Vehicle - hit us	Private Vehicle - we hit	Road	Semi - hit us	Semi - we hit	Trailer	Train Tracks / Lights	Utility
Central Operations	4	1	0	7	3	1	0	0	0	0	1	0	1	0	1	0	2	1	2	4	1	0	4	0	0	0	0	1	12	0	0	3	1	1	4	0	0	13	11	2	2	3	9	0	1	2	0	2	
CVE	1	1	0	2	2	0	0	1	2	0	0	1	0	0	0	0	0	0	0	0	0	0	0	4	0	3	0	0	1	0	1	0	0	0	0	0	0	0	0	2	0	1	1	0	0	0	1	0	0
Fleet	10	1	1	6	10	0	0	0	0	1	2	1	1	4	1	1	4	2	0	1	2	0	1	5	0	0	2	1	0	1	0	0	1	0	0	2	0	0	1	1	1	0	1	0	0	0	0	0	0
Northern Operations	7	0	0	4	4	1	1	0	0	0	1	0	3	2	0	0	5	0	0	2	0	0	1	0	1	1	0	0	2	0	0	2	0	0	7	0	0	11	8	1	1	1	8	0	0	0	0	0	
Office	3	2	0	7	3	0	0	1	0	1	0	1	1	1	0	0	1	3	1	2	1	0	0	4	0	1	1	1	0	0	0	0	0	0	2	0	0	1	2	0	1	1	3	0	0	0	0	0	
Southern Operations	13	2	0	4	4	0	0	2	0	0	2	0	2	0	0	3	7	3	1	1	0	0	4	2	0	1	0	0	8	0	0	3	0	0	6	0	0	6	9	4	4	1	14	1	1	6	0	0	
Specialty Crews	7	3	0	6	4	0	1	1	0	0	1	3	0	2	1	2	2	3	0	0	1	0	0	4	0	0	2	0	0	0	1	4	0	0	1	0	0	1	5	1	3	1	0	3	0	0	0	0	
TOTAL	45	10	1	36	30	2	2	5	2	2	3	9	3	13	4	4	10	22	5	6	11	1	1	26	2	5	7	2	1	24	0	2	13	1	1	22	0	0	33	38	9	12	9	34	4	2	9	0	2